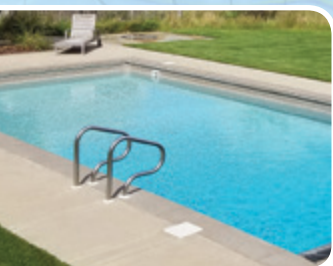




# Swimming Pool Leak Detection **PRODUCT CATALOG**

2023



## START PROFITING FROM LEAK DETECTION!

Every pool, no matter how well it was made, will eventually develop a leak. With more pools than ever currently operating, the opportunity for finding and fixing leak problems is substantial. Whether you are just getting started or are a pro upgrading to the latest equipment - you can count on Anderson Manufacturing to be your partner for leak detection success.



### 1. GATHER INFORMATION AND CONFIRM LEAKS

Before investing in extensive testing procedures it is important to gather information about the pool's actual water loss. The **Leakalyzer Rapid Water Loss Sensor** gives you dependable information in just minutes - assuring efficiency of later location steps.

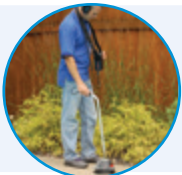
Page 2



### 2. PRESSURE TEST PLUMBING LINES

Pressure test plumbing lines to identify leaking sections of plumbing and confirm non-leaking sections. **Pressure Testing Kits** provide an assortment of closed and open stem test plugs along with a versatile pressure tester to quickly and easily test most plumbing systems without cutting lines.

Pages 3-8



### 3. PINPOINT UNDERGROUND PLUMBING LEAKS

If a leaking section of plumbing is identified, add a constant flow of air from a regulated air source into the line. As this air escapes into water-saturated soil it will make a distinctive bubbling sound that can be pinpointed through the deck with an **Electronic Listening Device**.

Pages 9-10

### 4. LOCATE LEAKS IN POOL STRUCTURE

Use the **LeakTrac 2400 Vinyl Liner Leak Detector** to quickly locate even the smallest pinhole leaks in vinyl liners without getting into the pool. An underwater **Hydrophone** accessory for any of the electronic listening devices can be used to help locate leaks in gunite pools. To check fittings and other fixtures attached to the pool shell, use a **Dye Tester and isolation tools**.

Pages 11-12

### 5. REPAIR LOCATED LEAKS

Use the complete line of **Leakmaster epoxies and sealants** to provide leak repair solutions for virtually any shell or fitting leak. For underground plumbing leaks use our specialty PVC repair fittings and tools or team up with someone with concrete cutting and repair expertise.

Pages 13-19

Diving Equipment - [Page 20](#) | Complete Equipment Packages - [Page 21](#) | Winterizing Products - [Page 22](#)

## Looking for additional leak detection training?

Sign up for the hands-on training course at our facility in St. Paul, MN or check out our [online resources](#).

**In-person Training:** The one-day hands on training course sets you up with the technical knowledge you need to build confidence in your abilities and start profiting from leak detection. Learn about the most efficient process to follow, the science behind the tests, and how to effectively use top quality equipment through a mix of hands on and classroom learning.

**Free Online Resources:** Our online training slideshows provide a comprehensive overview of the leak detection process to help you learn the basics at your own pace. Also check out the helpful blog and video content for additional information.



For more information and upcoming dates visit [leaktools.com/training](http://leaktools.com/training) or call us at (800) 348-1316.



POOL & HOT TUB  
ALLIANCE

Education  
Partner

## EASY ORDERING



### Phone Orders

1-800-348-1316

1-651-484-1316

8am – 5pm CT, Monday – Friday



### Order Online

[www.leaktools.com](http://www.leaktools.com)



Prices are not guaranteed and are subject to change without notice. All items purchased from this catalog are pursuant to a shipment contract from the carrier. This means that the risk of loss and title for such items passes to you upon our delivery to that carrier. All information in this catalog is subject to change without notice. While every effort has been made to ensure the information is correct, Anderson Manufacturing Co., does not warrant the accuracy of the information in this catalog. All orders and payments are received, accepted, and processed in St. Paul, Minnesota.



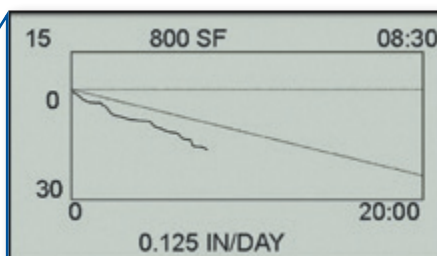
# Water Loss Measurements in Minutes!

## **LEAKALYZER™** Water Loss Sensor

The **LZ400-Water Loss Sensor** enables rapid determination of a pool's water loss. Using sensitive electronic sensors and proprietary filtering methods it measures water level changes to the 10,000th of an inch. Leaks or evaporation of as little as 1/8 of an inch per day can be identified in 10 minutes.



Use the new Bluetooth connection and Reporting App to send tests to your mobile device for editing, analysis, and creation of reports. You can organize an unlimited number of tests, edit settings for each job, crop and add notes to your tests, and generate customer ready PDF reports or JPG images that can be included in your own reports. This free app is available on the Apple App Store and Google Play Store.



The solid line represents water loss of 3/4 gallon from an 800 square foot pool over 8 minutes and 30 seconds. This is shown in relation to a reference line (downward sloping dashed line) that represents .125 inches per day loss rate.

### Consider the following money making and time saving benefits the Leakalyzer enables:

- Provide "Leak Status Certifications" for pool owners, insurance companies and realtors.
- Confirm a pool's leak status before investing time in extensive leak location procedures.
- Confirm that leaks have been fixed at the completion of repair thus avoiding expensive "call-backs."
- Improve location efficiency by comparing water loss results under different pool conditions (ex: lines plugged vs. unplugged or pump on vs. pump off).

### FEATURES AND SPECIFICATIONS:

#### #LZ400 — WATER LOSS SENSOR

- Graphic LCD readout provides an instantaneous readout as well as a historical plot of water level changes.
- Actual plot can be compared to a straight line slope representing an estimated evaporation rate.
- Detail calculation screen provides estimates of water loss in inches or gallons per hour or day.
- Save up to 10 tests with time and date stamp of test.
- Download saved tests to a computer through a USB connection for further analysis and inclusion in reports, documents or invoices.
- Mark up to 10 events during a test such as pump on/off. Water loss between each mark can be independently analyzed on a computer after data is downloaded.
- Sensor system and embedded software minimizes the effect of rough water and wave motion.
- Quick setup and touch pad controls make operation easy and worry free.
- 2 AA batteries provide over 15 hours of operation.
- All components pack into a durable 18" x 14" x 8" case.

# LZ400 Water Loss Sensor..... \$ 1,890.00



## **NEW! Leak Job Data Collection and Reporting Program**

Leak Logic is a new swimming pool leak job data collection and reporting app that helps users through the leak detection process and uses data collected throughout that process to produce a professional report. For more information, check out the back cover or [leaktools.com/leaklogic](http://leaktools.com/leaklogic).

Call or check our website for current prices.

# Pressure Testing Kits

Each Pressure Testing Kit includes a Pressure Tester and an assortment of our best test plugs in sizes and styles to quickly and confidently pressure test most residential swimming pools. Made with heavy duty hardware for a long life and straight sided rubber for a secure seal, these plugs will provide years of dependable service. Depending on where you're located and the type of pools you frequently work on, you will likely customize your kit with additional plug sizes and styles based on your experience.



## "THE PROFESSIONAL" — #246

48-piece kit is designed for testing pools with 1" to 2" lines. Kit contains the following tools packaged in a durable tote:



**\$720<sup>00</sup>**

### Open Stem Inducer Plugs

1-020	15/16" (1" pipe)
1-040	1-3/8" (1-1/2" male ad.)
1-045	1-1/2" (1-1/2" pipe)
1-053	1-13/16" (2" male ad.)
1-055	1-7/8" (2" pipe)
1-040E	1-3/8" (1-1/2" male ad.)

### Standard Plugs

2-105	9/16" (1/2" pipe)
2-112	3/4" (3/4" pipe)
2-120	15/16" (1" pipe)
2-135	1-1/4" (1-1/4" pipe)
2-140	1-3/8" (1-1/2" male ad.)
2-145	1-1/2" (1-1/2" pipe)
2-152	1-3/4" (1-1/2" threads)
2-153	1-13/16" (2" male ad.)
2-155	1-7/8" (2" pipe)
1-160	2" (2" pipe)
1-165	2-1/8" (2" threads)

### Extender

1-120E	15/16" (1" pipe)
1-135E	1-1/4" (1-1/4" pipe)
1-145E	1-1/2" (1-1/2" pipe)
1-155E	1-7/8" (2" pipe)

### Brass Hook

2-820	15/16" (1" pipe)
2-835	1-1/4" (1-1/4" pipe)
2-845	1-1/2" (1-1/2" pipe)
2-855	1-7/8" (2" pipe)

### Inflatable Plugs

1-520	2' hose
1-550	1-1/4" — 1-1/2"
1-555	2"

### Accessories

1-PT14	Pressure Tester
4-CPH18	18" Inducer Hose
1-CL18	Male Quick Connect "L"

## "THE ROUTE MATE" — #226

32-piece kit is designed for testing pools with 1-1/2" to 2" lines. Kit contains the following tools packaged in a durable tote:



**\$555<sup>00</sup>**

### Open Stem Inducer Plugs

1-040	1-3/8" (1-1/2" male ad.)
1-045	1-1/2" (1-1/2" pipe)
1-053	1-13/16" (2" male ad.)
1-055	1-7/8" (2" pipe)
1-040E	1-3/8" (1-1/2" male ad.)

### Standard Plugs

2-140	1-3/8" (1-1/2" male ad.)
2-145	1-1/2" (1-1/2" pipe)
2-152	1-3/4" (1-1/2" threads)
2-153	1-13/16" (2" male ad.)
2-155	1-7/8" (2" pipe)
1-160	2" (2" pipe)
1-165	2-1/8" (2" threads)

### Extender

1-145E	1-1/2" (1-1/2" pipe)
1-155E	1-7/8" (2" pipe)

### Brass Hook

2-845	1-1/2" (1-1/2" pipe)
2-855	1-7/8" (2" pipe)

### Inflatable Plugs

1-520	2' hose
1-550	1-1/4" — 1-1/2"
1-555	2"

### Accessories

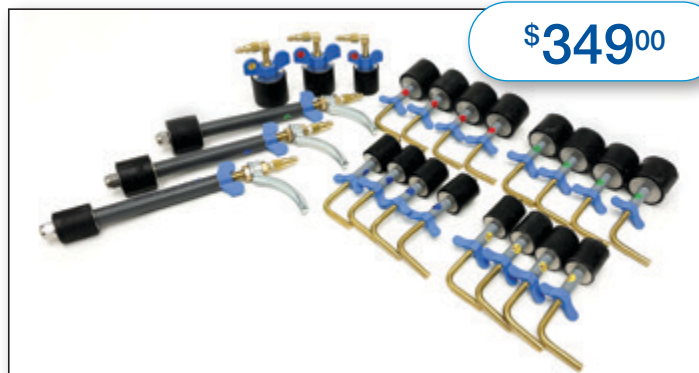
1-PT14	Pressure Tester
2-CPH18	18" Inducer Hose
2-CL18	Male Quick Connect "L"

# Add-On Plug Kits

Based on the types of pools you encounter and where you're located in the country you may want to consider adding one of the following Add-On Plug Kits to boost your pressure testing supply.

## ADD-ON KIT — #2AD1

Includes additional plugs in the most popular sizes already included in the base level pressure testing kits.



**\$349<sup>00</sup>**

### Open Stem Inducer Plugs

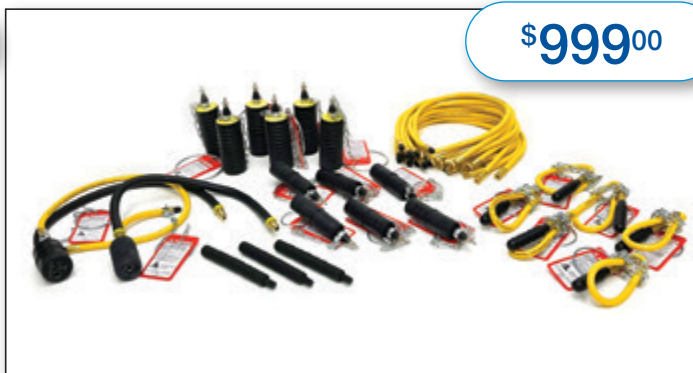
- 1-050 1-5/8"
- 1-060 2" (2" pipe)
- 1-065 2-1/8" (2" threads)
- 1-045E 1-1/2" (1-1/2" pipe)
- 1-053E 1-13/16" (2" male adapter)
- 1-055E 1-7/8" (2" pipe)
- 3-CL18 Male Quick Connect "L"

### Brass Hook Plugs

- 4-840 1-3/8" (1-1/2" male adapter)
- 4-845 1-1/2" (1-1/2" pipe)
- 4-855 1-7/8" (2" pipe)
- 4-860 2" (2" pipe)

## INFLATABLE PLUG KIT — #2ADINF

Includes a selection of the most popular inflatable plugs in sizes that range from 3/4" to 2".



**\$999<sup>00</sup>**

### Open Stem Inducer Plugs

- 1-550BP-CPH 1-1/2" Open Inflatable Plug w/ Inducer Hose
- 1-555BP-CPH 2" Open Inflatable Plugs w/ Inducer Hose

### Closed Inflatable Plugs

- 6-545 3/4" to 1-1/4"
- 3-548 3/4" to 1-1/2"
- 6-550 1-1/2"
- 6-555 2"
- 14-520 2' Extension Air Hose

## SMALL SIZES KIT — #2ADSM

Includes plugs for 1/2" to 1" pipe in a variety of styles.



**\$299<sup>00</sup>**

### Open Stem Inducer Plugs

- 1-001CPH 15/32"
- 1-005E 9/16" (1/2" pipe)
- 1-012E 3/4" (3/4" pipe)
- 1-020E 15/16" (1" pipe)

### Standard Plugs

- 4-101 15/32"
- 10-301 Tapered Gutter Stoppers

### Extender

- 2-105E 9/16" (1/2" pipe)
- 2-112E 3/4" (3/4" pipe)
- 2-120E 15/16" (1" pipe)

### Brass Hook Plugs

- 4-805 9/16" (1/2" pipe)
- 4-812 3/4" (3/4" pipe)
- 2-820 15/16" (1" pipe)

## LARGE SIZES KIT — #2ADLG

Includes plugs for 2-1/2" to 4" pipe in a variety of styles.



**\$399<sup>00</sup>**

### Open Stem Inducer Plugs

- 1-070 2-3/8" (2-1/2" pipe)
- 1-085 3" (3" pipe)
- 1-099 4" (4" pipe)
- 3-CL18 Male Quick Connect "L"

### Brass Hook Plugs

- 4-870 2-3/8" (2-1/2" pipe)

### Standard Plugs

- 4-170 2-3/8" (2-1/2" pipe)
- 2-185 3" (3" pipe)
- 2-199 4" (4" pipe)

Call or check our website for current prices.

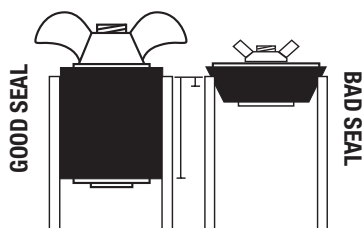


## Individual Closed Plugs

Accept no compromises when it comes to the sealing effectiveness of your test plugs. A plug that leaks under pressure could mean inaccurate test results.

A plug that "pops out" wastes valuable time and places anyone in the area at risk of injury.

Anderson plugs use straight sided rubber for extra sealing area and large wingnuts for easy expansion. Unless otherwise indicated we use only corrosion free hardware ensuring years of trouble free service.



Don't see what you need?  
Call us, we can custom build  
special plugs.

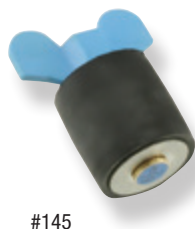
Due to frequent changes in raw material cost, prices  
are subject to change without notice. Call or check  
our website for current prices.



### SUPPLIES DISCOUNT

A 10% discount is available when you  
purchase over \$250 worth of qualifying  
individual plugs, pressure test accessories,  
dye testers, and repair products.

Call or check our website for current prices.



#145



#145N



#845

## STANDARD PLUGS-CLOSED

Versatile plug with corrosion free hardware can be used to plug virtually any easily accessible opening.

Part #	Rubber Diameter Inches	Metric (mm)	Pipe Application (Sch 40)	Sticker Color	Price
101	15/32"	12			\$ 4.40
105	9/16"	14	1/2" pipe		4.40
110	11/16"	17			4.40
112	3/4"	19	3/4" pipe		4.40
115	13/16"	21			9.40
120	15/16"	24	1" pipe		9.40
125	1-1/16"	27	1" threads		9.40
130	1-3/16"	29			9.40
135	1-1/4"	32	1-1/4" pipe		9.40
140	1-3/8"	35	1-1/2" male ad./cop. pipe		9.40
145	1-1/2"	38	1-1/2" pipe		9.40
150	1-5/8"	44			10.60
152	1-3/4"	46	1-1/2" threads		10.60
153	1-13/16"	47	2" male adapter		10.60
155	1-7/8"	48	2" pipe		11.20
160	2"	51	2" pipe		15.80
165	2-1/8"	54	2" threads		18.40
170	2-3/8"	60	2" socket & 2-1/2" pipe		20.30
175	2-1/2"	64	2-1/2" threads		26.40
180	2-3/4"	70	2-1/2" socket		29.90
185	3"	76	3" pipe & threads		33.20
190	3-1/4"	83	3" socket		35.60
195	3-1/2"	89			41.00
199	4"	102	4" pipe & threads		52.00

## NYLON TEST PLUGS-CLOSED

Economical model of the standard plug, uses a nylon stem and wing-nut. Maintains superior sealing properties. Great for winterizing too.

Part #	Rubber Diameter Inches	Metric (mm)	Pipe Application (Sch 40)	Sticker Color	Price
105N	9/16"	14	1/2" pipe		\$ 2.00
110N	11/16"	17			2.00
112N	3/4"	19	3/4" pipe		2.20
115N	13/16"	21			4.30
120N	15/16"	24	1" pipe		4.30
125N	1-1/16"	27	1" threads		5.00
130N	1-3/16"	29			5.00
135N	1-1/4"	32	1-1/4" pipe		5.00
140N	1-3/8"	35	1-1/2" male ad./cop. pipe		5.00
145N	1-1/2"	38	1-1/2" pipe		5.20
150N	1-5/8"	44			5.70
152N	1-3/4"	46	1-1/2" threads		5.80
153N	1-13/16"	47	2" male adapter		5.80
155N	1-7/8"	48	2" pipe		6.70
160N	2"	51	2" pipe		12.80
165N	2-1/8"	54	2" threads		14.70
170N	2-3/8"	60	2" socket & 2-1/2" pipe		15.00

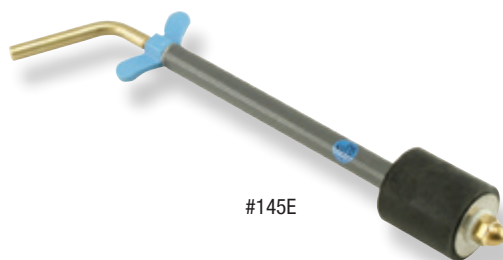
## BRASS HOOK PLUGS

A 1-1/2" extension between the wingnut and rubber allows a seal to be made past threads in return lines or main drains.

Part #	Rubber Diameter Inches	Metric (mm)	Pipe Application (Sch 40)	Sticker Color	Price
805	9/16"	14	1/2" pipe		\$ 9.70
810	11/16"	17			9.70
812	3/4"	19	3/4" pipe		9.70
815	13/16"	21			11.60
820	15/16"	24	1" pipe		11.60
825	1-1/16"	27	1" threads		11.60
830	1-3/16"	29			11.60
835	1-1/4"	32	1-1/4" pipe		12.10
840	1-3/8"	35	1-1/2" male ad./cop. pipe		12.10
845	1-1/2"	38	1-1/2" pipe		12.10
850	1-5/8"	44			12.80
852	1-3/4"	46	1-1/2" threads		12.80
853	1-13/16"	47	2" male adapter		12.80
855	1-7/8"	48	2" pipe		12.80
860	2"	51	2" pipe		16.90
865	2-1/8"	54	2" threads		17.90
870	2-3/8"	60	2" socket & 2-1/2" pipe		17.90



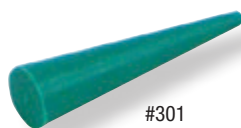
#745



#145E



#150SE



#301



#545

#555

#548

#540

## ECONOMY HOOK PLUGS

Economical model of brass hook plug uses nickel-plated hardware.

Part #	Rubber Diameter		Pipe Application (Sch 40)	Sticker Color	Price
	Inches	Metric (mm)			
705	9/16"	14	1/2" pipe	Red	\$ 7.60
712	3/4"	19	3/4" pipe	Blue	7.60
720	15/16"	24	1" pipe	Yellow	9.50
735	1-1/4"	32	1-1/4" pipe	Red	9.50
740	1-3/8"	35	1-1/2" male ad./cop. pipe	Yellow	10.10
745	1-1/2"	38	1-1/2" pipe	Blue	9.90
750	1-5/8"	44		Red	10.60
752	1-3/4"	46	1-1/2" threads	Yellow	10.80
753	1-13/16"	47	2" male adapter	Blue	10.80
755	1-7/8"	48	2" pipe	Green	11.00

## EXTENDER PLUGS-CLOSED

A 6-1/2" extension between the wingnut and rubber allows a seal to be made deep inside a pipe. Skimmers, cleaner lines and therapy heads are common applications.

Part #	Rubber Diameter		Pipe Application (Sch 40)	Sticker Color	Price
	Inches	Metric (mm)			
105E	9/16"	14	1/2" pipe	Red	\$ 13.00
110E	11/16"	17		Green	13.00
112E	3/4"	19	3/4" pipe	Blue	13.00
115E	13/16"	21		Red	14.90
120E	15/16"	24	1" pipe	Yellow	14.90
125E	1-1/16"	27	1" threads	Blue	14.90
130E	1-3/16"	29		Green	14.90
135E	1-1/4"	32	1-1/4" pipe	Red	15.60
140E	1-3/8"	35	1-1/2" male ad./cop. pipe	Yellow	15.60
145E	1-1/2"	38	1-1/2" pipe	Blue	15.60
150E	1-5/8"	44		Red	16.50
152E	1-3/4"	46	1-1/2" threads	Yellow	16.50
153E	1-13/16"	47	2" male adapter	Blue	16.50
155E	1-7/8"	48	2" pipe	Green	16.50
160E	2"	51	2" pipe	Red	16.50
165E	2-1/8"	54	2" threads	Yellow	23.70
170E	2-3/8"	60	2" socket & 2-1/2" pipe	Green	20.60

## SKIMMER PLUGS

An extra long extension rubber allows both suction and main drain lines to be blocked on Vari-flow type skimmers that "T" the suction line off the main drain.

Part #	Rubber Diameter		Pipe Application (Sch 40)	Price
	Inches	Metric (mm)		
150SE	1-5/8"	44	1-5/8" Skimmer	\$ 21.00

## GUTTER STOPPER PLUG

2" long stopper tapers from 1/8" to 1/2". Works well for low pressure testing of scum gutters, spa air bubblers, and any other small openings. Neoprene rubber.

Part #	Description	Price
301	Gutter Stopper Plug	\$ 0.75

## INFLATABLE PLUGS

Part #	Pipe Application (Sch 40)	Price
540	1/2"	\$ 45.00
545	3/4" - 1"	29.00
548	3/4" - 1-1/2"	51.00
550	1-1/4" - 1-1/2"	28.35
555	2"	36.50
560	3"	32.50
565	4"	38.00
570	5"	64.00
575	6"	99.00
585	8"	167.00

\*Larger sizes available. Supplies Discount does not apply to plugs larger than 4" (part #570 and higher).\*



#520

## EXTENSION HOSES FOR INFLATABLE PLUGS

Part #	Length	Price
520	2 foot	\$ 11.25
521	2 foot (black hose)	11.40
525	5 foot	20.00
530	10 foot	25.00
535	20 foot	56.00



Items on this page qualify for the 10% Supplies Discount.

Call or check our website for current prices.

## Pressure Induction Equipment

By introducing water or air into the pool plumbing system leaks can be detected and located. Our system makes the process simple and efficient. Versatile Open Stem Plugs can also be adapted for a variety of other purposes.

A simple quick connect coupling system used in conjunction with Open Stem Plugs allows access to virtually any plumbing opening without cutting pipe or depending on leaky threads.



### PRESSURE TESTER

The Pressure Tester allows the inducement and measurement of water or air pressure in a plumbing system with the simple turn of a handle. A versatile quick connect coupling system used in conjunction with open stem plugs allows access to virtually any plumbing connection without cutting lines or depending on leaky threads. All brass & stainless steel construction with 30 psi pressure gauge. Air connection is a 1/4" quick connect insert. Water connection hooks to an ordinary garden hose.

Part #	Description	Price
# PT14	Pressure Tester	\$ 149.00
# PT16	Pressure Tester with oil filled gauge	134.00
# PT12	Pressure Tester—water only	78.50
# PT10	Builders Air Tester	30.00

### STANDARD OPEN STEM PLUGS

The Standard Open Plug has a 1/4" hole through the center of the plug stem. The plug top is a combination 1/8" pipe thread and 3/8" hose barb.

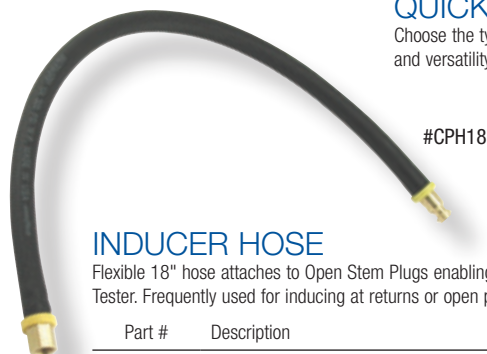
Part #	Rubber Diameter		Pipe Application (Sch 40)	Sticker Color	Price
	Inches	Metric (mm)			
001CPH*	15/32"	12			\$ 17.00
005CPH*	9/16"	14	1/2" pipe	●	17.00
010CPH*	11/16"	17		●	17.00
012CPH*	3/4"	19	3/4" pipe	●	17.00
015	13/16"	21		●	11.10
020	15/16"	24	1" pipe	●	10.80
025	1-1/16"	27	1" threads	●	10.80
030	1-3/16"	29		●	10.80
035	1-1/4"	32	1-1/4" pipe	●	10.80
040	1-3/8"	35	1-1/2" male ad./cop. pipe	●	10.80
045	1-1/2"	38	1-1/2" pipe	●	11.30
050	1-5/8"	44		●	11.70
052	1-3/4"	46	1-1/2" threads	●	11.70
053	1-13/16"	47	2" male adapter	●	12.10
055	1-7/8"	48	2" pipe	●	12.60
060	2"	51	2" pipe	●	19.50
065	2-1/8"	54	2" threads	●	19.60
070	2-3/8"	60	2" socket & 2-1/2" pipe	●	21.30
075	2-1/2"	64	2-1/2" threads	●	31.80
080	2-3/4"	70	2-1/2" socket	●	32.40
085	3"	76	3" pipe & threads	●	36.00
090	3-1/4"	83	3" socket	●	38.50
095	3-1/2"	89		●	45.60
099	4"	102	4" pipe & threads	●	57.00

\* These items are shipped ready to be attached to our PT14 Pressure Tester.

Part numbers 015-099 require part numbers CL18 or CPH18 for attachment to PT14.

### QUICK CONNECT FITTINGS

Choose the type of quick connect fitting needed to attach your Open Stem Plugs to your Pressure Tester. To fully realize the time saving benefit and versatility of the system, most professionals attach one of these fittings to each Standard Open Plug.



#### INDUCER HOSE

Flexible 18" hose attaches to Open Stem Plugs enabling connection to Pressure Tester. Frequently used for inducing at returns or open pipe.

Part #	Description	Price
# CPH18	18" Inducer Hose to male Q.C.	\$ 14.40



#### 1/8" QUICK CONNECT "L"

Provides compact 90 degree connection between Open Stem Plug and Pressure Tester. Used for testing suction lines from inside pump pots.

Part #	Description	Price
# CL18	Male Quick Connect "L"	\$ 4.50

Due to frequent changes in raw material costs, prices are subject to change without notice. Call or check our website for current prices.



Items on this page qualify for the 10% Supplies Discount. See page 5 for details.





#045E

## EXTENDER PLUGS-OPEN

A 6-1/2" extension between wingnut and rubber allows for pressure induction at skimmer and return lines. Includes quick connect coupling top for attaching to the Pressure Tester.

Part #	Rubber Diameter		Pipe Application (Sch 40)	Sticker Color	Price
	Inches	Metric (mm)			
005E	9/16"	14	1/2" pipe	Red	\$ 36.20
010E	11/16"	17		Green	36.20
012E	3/4"	19	3/4" pipe	Blue	36.20
015E	13/16"	21		Red	38.00
020E	15/16"	24	1" pipe	Yellow	41.80
025E	1-1/16"	27	1" threads	Blue	41.80
030E	1-3/16"	29		Green	41.80
035E	1-1/4"	32	1-1/4" pipe	Red	41.80
040E	1-3/8"	35	1-1/2" male ad./cop. pipe	Yellow	41.80
045E	1-1/2"	38	1-1/2" pipe	Blue	42.40
050E	1-5/8"	44		Red	42.40
052E	1-3/4"	46	1-1/2" threads	Yellow	44.90
053E	1-13/16"	47	2" male adapter	Blue	44.90
055E	1-7/8"	48	2" pipe	Green	44.90
060E	2"	51	2" pipe	Red	48.50
065E	2-1/8"	54	2" threads	Yellow	48.50
070E	2-3/8"	60	2" socket & 2-1/2" pipe	Green	48.50



#550BP-CPH

#555BP

## INFLATABLE PLUGS-OPEN

Combines the versatility of an inflatable plug with pressure induction capabilities. Great for inducing through Jandy Valves or other hard to reach spots. Parts 550BP, 555BP, and 557BP include a 90 degree quick connect for attachment to the Pressure Tester.

Part #	For Pipe Diameter	Price
550BP	1-1/2"	\$ 110.00
555BP	2"	117.00
557BP	2-1/2"	190.00
0560	3" (Requires 1" standard open plug #020)	119.00
0565	4" (Requires 1" standard open plug #020)	120.50
0570	5" (Requires 1" standard open plug #020)	128.00
0575	6" (Requires 1-1/2" standard open plug #045)	175.00
0585	8" (Requires 3" standard open plug #085)	216.00
550BP-CPH	1-1/2" with inducer hose	115.00
555BP-CPH	2" with inducer hose	122.00
557BP-CPH	2-1/2" with inducer hose	195.00

\*Larger sizes available. Supplies Discount does not apply to plugs larger than 2" (part #557BP and higher).\*



#550Q

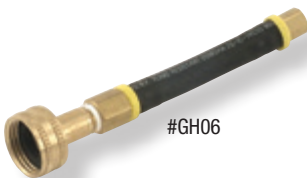
## Q-BALL PLUG

This versatile Open Inflatable Plug with 2-1/2 foot flexible hoses attached allows easy access to Multi-Port Valves for pressure induction. Includes quick connect air fittings.

Part #	For Pipe Diameter	Price
550Q	1-1/2"	\$ 91.00

## OTHER ACCESSORIES FOR OPEN STEM PLUGS

Attach these accessories to your open stem plugs for a wide variety of applications beyond just pressure testing of existing plumbing.



#GH06

### PUMP PRIMING ATTACHMENT

This 6" long hose screws to the top of Standard Open Plugs allowing them to be attached to a garden hose to prime the pump.

Part #	Description	Price
# GH06	6" Pump Priming Attachment	\$ 18.00



#SV18

### TIRE VALVE ATTACHMENT

Attaches to the top of Standard Open Plugs to create an air lock for winterizing.

Part #	Pipe Application (Sch 40)	Price
# SV18	Tire Valve Attachment	\$ 4.90



#PT10

### BUILDERS AIR TESTER

Easily attaches to our Standard Open Plugs. A Schrader valve on the tester allows the system to be charged with a standard air chuck.

Part #	Description	Price
# PT10	Builders Air Tester	\$ 30.00



Items on this page qualify for the 10% Supplies Discount. See page 5 for details.

Check our website or call for information about Air Hoses.

Call or check our website for current prices.



# Listening Devices

Listening devices are used to pinpoint underground plumbing leaks by detecting the distinctive bubbling sound created when air is blown through the leak into water saturated soil.

Fisher Listening devices offer the latest in digital circuitry, ease of use, and advanced acoustical technology.

## KEY FEATURES:

- Thoughtful design elements such as easy-to-use touchpad controls and rubber soundproofing around microphones
- Clear LCD display that protects the unit from dirt, moisture, and rough treatment
- Microphones that feature the latest technology to enhance even the weakest sounds deep underground or in sound muffling conditions
- Multiple filtering options to eliminate distracting noise and reduce search area
- Ability to add a hydrophone for added functionality

▲ The XLT30H Big Foot Microphone has a rigid handle that allows "hands free" listening.

▶ The thin ground probes allow the user to easily reach buried pipes under soft surfaces.



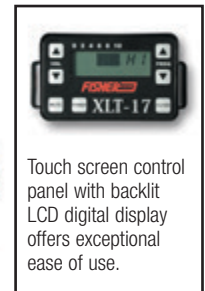
Touch screen control panel with backlit LCD digital display offers trouble free operation.

## #XLT30H FISHER ELECTRONIC LISTENING DEVICE

### XLT30H Features:

- Advanced amplification and filtering circuitry provides excellent sensitivity
- Includes the popular "Bigfoot" microphone with a solid handle for listening through solid substances, as well as a ground probe for listening through grass and gravel
- 4 different filter options including a "Notch" filter that enables elimination of specific unwanted sounds
- LCD readout with backlighting
- Peak hold feature allows for sound comparison
- Switch enables optimized frequency tuning for underground leaks or for hydrophone use
- Two 9 volt batteries provide 40 hours of operation
- Case Dimensions 32" x 8-1/2" x 8-1/4"

# XLT30H Fisher Electronic Listening Device .....\$ 3,247.00



Touch screen control panel with backlit LCD digital display offers exceptional ease of use.

## #XLT17 FISHER ELECTRONIC LISTENING DEVICE

### XLT17 Features:

- Simple to use and durable, this unit has been designed specifically to address the needs of the average swimming pool service company
- Efficient "Multi sensor" microphone can be adapted for both solid substance listening or with ground rod attachments for listening through grass or gravel
- 3 different filter options
- LCD readout
- Two 9 volt batteries provide 40 hours of operation
- Case dimensions 21" x 15" x 7"

# XLT17 Fisher Electronic Listening Device .....\$ 1,820.00

# Hydrophones

## ADD A HYDROPHONE TO YOUR LISTENING DEVICE

Hydrophones are microphones that have been waterproofed so they can be used underwater. By positioning the hydrophone close to suspected structural leaks or by slipping them inside pipes or down into skimmer throats the distinct sound of water escaping from the pool can often be heard. Additionally, hydrophones can be used to listen for leaks in pressurized plumbing lines that run close to the pool wall. Often listening through the pool wall with a hydrophone will be more effective than listening through the deck.



### AQUARIAN H2

Produced by a leader in the hydrophone industry and copied by others, the H2 utilizes an integrated weight within the well protected microphone. This useful and sensitive design can be easily positioned to pick up leaks in all parts of the pool shell.

# HYDX32 H2 Hydrophone plus Adapter.....\$ 295.00  
(Specify XLT17 or XLT30)



### AQUARIAN H3

Utilizing a slightly smaller microphone and a moveable weight, this Aquarian design can be pushed further into pipes than the H2 version. Not quite as long lasting or sensitive as the H2 but a versatile design that can be used in a variety of applications.

# HYDX33 H3 Hydrophone plus Adapter.....\$ 335.00  
(Specify XLT17 or XLT30)



## BASIC HYDROPHONE PACKAGE

Aquarian Hydrophones are also available in this stand-alone package for those who do not require the full featured capability of an XLT17 or XLT30 Listening Device. Includes the Aquarian H2 Hydrophone, a simple off-the-shelf amplifier, over the ear headphones, and a padded carrying case.

# HYDXP  
Basic H2 Hydrophone Package.....\$ 750.00  
# HYDX32  
Replacement H2 Hydrophone .....\$ 215.00  
# HYDC33  
Replacement H3 Hydrophone .....\$ 255.00



## ► What's the right listening device for you?

**XLT17** — Great for the service company that wants the amplification and frequency filtering benefits of an electronic device at a reasonable cost. Its simplicity and durability make it great for companies with several technicians who will be sharing the equipment.

**XLT30H** — This is the most sensitive listening device we have found. Advanced filtering capabilities, digital circuitry and an advanced yet simple user interface makes this the obvious choice for leak detection specialists. Includes settings to maximize sensitivity for use with both ground microphones and hydrophones.

**HYDXP** — The best choice if you want a hydrophone but don't need underground pipe leak locating capabilities.

Call or check our website for current prices.





# LEAK TRAC 2400

## WIRELESS

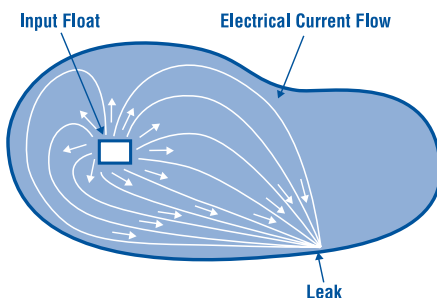
Demonstration  
Videos Available at  
[leaktools.com](http://leaktools.com)

### Find vinyl liner leaks in just minutes!

The LeakTrac 2400 uses patented technology to direct you to even the smallest pinhole leak in minutes. Stop wasting time visually inspecting every inch of a liner. Join the thousands of other pool professionals who are saving time and generating profits with this amazing piece of equipment.

The LeakTrac 2400 finds leaks by putting a small electrical charge into the pool water, then tracking the flow of electricity as it makes connections to the ground through conductive penetrations in the liner. This technology is effective on any water containing vessel with an electrically insulating shell (vinyl, fiberglass, etc.).

USING THE  
LEAKTRAC 2400  
TAKES ONLY  
MINUTES.



Electricity flows from the "Input Float" to wherever there is a conductive path through the liner to the ground. This directional flow of electricity is detectable in virtually any part of the pool with the LeakTrac 2400 "Signal Processing Unit" (SPU) and "Probe".



Throw the "Input Float" into the pool. Electricity flows from the "Booster" through the float into the pool.



Attach the "Ground Cable" to a grounded object outside the pool. A ladder anchor, diving board anchor or ground stake will work.



Plug "Ground" and "Input" cables into the battery powered "Booster" that produces the detectable electrical current flow.



The "Probe" attaches to the end of a standard telescopic pole. It is then plugged into the back of the SPU.



The simple to operate SPU produces an audible clicking tone when the probe is pointed in the direction of the electrical flow.



As the "Probe" is brought closer to a leak the clicking increases in frequency allowing leaks to be pinpointed in minutes.

### SPECIFICATIONS:



- Input current less than .1 amp.
- Batteries: Booster (8 AA), SPU (2 AA)
- Case Size: 7" x 19" x 15"
- 3 power settings for long or short range tracking
- Solid state digital construction
- Uses 2400 MHz wireless connection for optional use without connector cable
- 1 year limited warranty
- Includes one light cover for insulating a pool light

# LT2400	LeakTrac 2400 — Wireless (2400 MHz)	\$ 1,995.00
# LTLC	Extra Light Cover with hand pump	\$ 165.00
# LTLC2	Extra Light Cover with suction pump	\$ 165.00
# LCCSE	Padded Light Cover Case	\$ 30.00



# **LEAKMASTER™** by Anderson **Dye Testing**

## PRE-FILLED DYE TESTERS & REFILL BOTTLES

Dye testers are used to identify the precise location of structural leaks or water movement in and out of pipes. The convenient syringe-style testers are filled with a special concentrated dye that holds together underwater. A six-inch plastic "needle" allows for precise dye placement without creating unwanted currents. The syringes can be refilled with Leakmaster Dye from the 8 oz. refill bottles. Available in blue for light backgrounds or fluorescent yellow for dark backgrounds.

### Blue Dye

# DT606	Bag of 6 dye testers.....	\$ 18.00
# DT640	Bulk case of 40 dye testers .....	\$ 84.00
# LD601	8 oz. bottle of dye .....	\$ 3.70
# LD620	Case of 20 bottles of dye .....	\$ 62.00
# DT665	Dye Tester retail hanger card (case 24) .....	\$ 67.20

### Fluorescent Yellow Dye

# FT606	Bag of 6 dye testers.....	\$ 18.00
# FT640	Bulk case of 40 dye testers .....	\$ 84.00
# FD601	8 oz. bottle of dye .....	\$ 3.70
# FD620	Case of 20 bottles of dye .....	\$ 62.00



*Dye testers and refill bottles qualify for the 10% Supplies Discount. See page 5 for details.*



## #DTKIT DYE TESTING KIT

This kit includes everything you need to get started with dye testing in a convenient carrying case. The kit includes:

- 3 – Blue Dye Testers
- 1 – 8 oz. Blue Refill Bottle
- 3 – Fluorescent Yellow Dye Testers
- 1 – 8 oz. Fluorescent Yellow Refill

### Bottle

- 5ft – Extension Tubing
- 1 – Set of Dye Testing Cones
- 1 – Inspection Mirror

# DTKIT Dye Testing Kit.....\$ 79.00



## PIPE ISOLATING CONE KIT

Block off all but one opening of the line to be tested with these one-sized-fits-all cones that friction fit into any pipe or fitting up to 2". In the remaining opening use the cone with a hole through it. Use to test returns, jet lines, floor cleaning systems, spa therapy jets and double bottom. Six total cones—including the one with the hole—nest conveniently into a compact stack.

# DTCONES 6 Cone Kit.....\$ 36.00



## FIXTURE ISOLATION DOME

Isolate pool fixtures to check for leaks using dye with this device. When pressed against the pool wall, the one-piece, flexible silicone dome covers the fixture and forms a watertight seal against the wall. A small stream of dye can be squirted at the opening of the attached clear tube to watch for movement. If there is a leak behind the dome, the suction from the water loss will cause dye to be drawn into the dome. Great for lights, main drains, and any other fixtures that can be isolated. The dome is approximately 12" wide.

#DTLC Light Leak Tester .....\$ 96.00



## INSPECTION MIRRORS

Allows for visual inspection of hidden areas. Double ball joint links swivel mirror for viewing 360 degrees. Made from tempered spring steel to withstand the stresses of constant repositioning, yet moves freely and holds desired position. Available in two sizes: the rectangular mirror (MIR) is 2-1/8" x 3-1/2" and extends to 15", the circular mirror (MIR-S) has a 7/8" diameter and extends to 27".

# MIR Inspection Mirror .....\$ 10.00

# MIR-S Inspection Mirror – Round .....\$ 10.00



## EYE BALL SEAT REMOVAL TOOL

Extra long design reaches deep into fittings recessed slots and provides extra leverage. Great for loosening slotted plugs. Fits 1-1/2" slotted wall fittings (Hayward, Pentair, etc.)

#MEB-WR Eye Ball Seat Removal Tool .....\$ 26.00





# Professional Leak Repair Product Line



The Leakmaster product line features a complete selection of professional leak repair solutions to satisfy the demands of any type of leak, surface material, or customer requirements. Check out the below chart to see recommended products for many common leak locations. Further details about each product can be found on the following pages.

	POOL GLUE	QUICK SET & POOL REPAIR PUTTY	BUTYL TAPE	FLEXIBLE SEALER	PEEL & STICK VINYL PATCHES	FOAM INJECTION SYSTEM
CONCRETE SHELL & TILE	✓	✓	✓	✓		✓
VINYL LINER	✓			✓	✓	
SKIMMERS	✓	✓				✓
LIGHTS	✓	✓	✓			
PLUMBING	✓			✓		
FITTINGS	✓	✓	✓	✓		
FIBERGLASS	✓			✓		
CURES UNDERWATER?	Yes	Yes	Yes	Yes	Yes	No
KEY FEATURES	Aggressive adhesion, cures hard but retains some flexibility, versatile, can be reinforced with fiberglass mesh	Cures hard, hand moldable, single stick format, versatile	Fills gaps, remains flexible, can be removed	Retains flexibility, strong adhesion, fills gaps, versatile	Pre-cut, no glue or mess, fast application, clear	Reinforces and seals concrete cracks

*Call or check our website for current prices.*





# Professional Leak Repair Solutions

## LEAKMASTER POOL GLUE



### ALL-PURPOSE POOL REPAIR SOLUTION

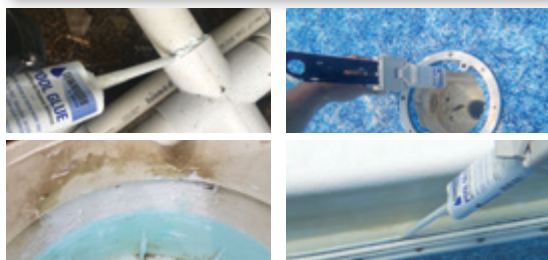
Leakmaster Pool Glue is a permanent repair solution for a wide variety of pool surfaces. It hardens like an epoxy, but it is much more adhesive and slightly flexible so it's able to move with the material it's bonded to instead of cracking or chipping off. It bonds to PVC, fiberglass, vinyl, PVC, ABS and more – making it a great solution for challenging skimmer and step repairs. Pool glue can be applied underwater and cures in only 20 – 60 minutes. It can also be used with fiberglass mesh strips for extra reinforcement.

### # PGK3 COMPLETE STARTER KIT ..... \$ 160.00

- 4 - #PG50 50ml Glue Cartridges
- 1 - #LP50 Dispenser Gun
- 10 - #HGTIP Mixer Tips
- 2 - 6" Bevel Edge Spreaders
- 2 - 6" x 8" Mixing Boards
- 1 - #HGFGS 2" x 10' Fiberglass Cloth
- 1 - #HGFG 4" x 10' Fiberglass Cloth
- 1 - Carrying Case

### PURCHASE INDIVIDUALLY

#PG50	50ml Cartridge of Pool Glue.....	\$ 22.00	#HGCON	Caulk Gun Converter for 50ml Cartridge.....	\$ 4.50
#HGTIP	Mixer Tips (sold individually).....	\$ 1.25	#HGFGS	Small 2" x 10' Fiberglass Cloth.....	\$ 4.90
#LP50	Dispenser Gun 50ml Cartridge.....	\$ 45.00	#HGFG 4"	Large 4" x 10' Fiberglass Cloth.....	\$ 3.50



## LEAKMASTER QUICK SET PUTTY



Hand-moldable epoxy putty in a convenient "one stick" format hardens above or below water to an "off-white". Aggressive adhesiveness and fast 5-minute cure time make Leakmaster Quick Set the logical choice for a multitude of non-cosmetic repairs.

- Repair cracks in skimmers, main drains and fittings
- Fill cracks in plaster, gunite, fiberglass, or acrylic
- Pack around light cable to seal leaking light conduit (permanent)
- Create a cast around pipe to hold Butyl Tape in place for plumbing leaks

# PQ501	Quick Set Putty single stick.....	\$ 6.80
# PQ512	Quick Set Putty display pack of 12 sticks.....	\$ 79.20

## LEAKMASTER POOL REPAIR PUTTY

This convenient and versatile epoxy works underwater and cures white in 20-60 minutes. The one-stick format eliminates waste and misproportioning.

# PP701	Pool Repair Putty single stick.....	\$ 6.80
# PP712	Pool Repair Putty display pack of 12 sticks.....	\$ 79.20



**Retail  
Best Seller**

## LEAKMASTER BUTYL TAPE



This hand-moldable rubber gap filler can be applied underwater without messy caulk guns or mixing. It retains a flexible, tacky consistency making it well-suited for a variety of permanent or temporary leak-stopping applications.

- Pack around light cable to seal leaking light conduit (removable)
- Replace rubber gaskets with or without removing fitting
- Fill/seal cracks, gaps or voids
- Hold in place with a cast of Quick Set Putty for pipe repairs

# BT15	Butyl Tape individually boxed 15' roll.....	\$ 8.90
--------	---	---------

Items on this page qualify for the 10% Supplies Discount.  
See page 5 for details.



Call or check our website for current prices.



# Professional Leak Repair Solutions

## LEAKMASTER FLEXIBLE SEALER

Nitrile rubber-based sealant provides a strong adhesive bond to most any material found around the swimming pool, even vinyl. Squeeze from the tube directly onto the material to be sealed. Flexible Sealer will skin over in seconds, allowing it to be flattened with a wet finger. Cures and remains flexible in minutes to hours depending on application thickness.

- Seal vinyl leaks with or without a patch
- Seal between liner and face plates or fittings
- Use as thread sealant or seal small, suction-side plumbing leaks
- Seal small cracks in gunite or plaster
- Can be applied underwater

# FS4B	Flexible Sealer 4 oz. tube-Blue .....	\$ 10.50
# FS4W	Flexible Sealer 4 oz. tube-White .....	\$ 10.50



## PEEL & STICK VINYL REPAIR PATCHES

Just peel the backing off of these conveniently pre-cut patches and stick them to the liner above or below the water line. Great for service or retail sale.

- No messy cans or tubes of glue needed
- Convenient pre-cut patches save you time at the pool
- Clear material can be used on any pattern
- Solvent-free adhesive bonds tenaciously underwater
- Repairs all types of vinyl including inflatables
- Zip-lock packaging (suitable for peg board display) facilitates both service and retail applications

# PS100	1" Peel & Stick Patches (bag of 30).....	\$ 6.00
# PS150	1-1/2" Peel & Stick Patches (bag of 20) .....	\$ 6.00
# PS200	2" Peel & Stick Patches (bag of 12).....	\$ 6.00
# PS123	Assorted Sizes Peel & Stick Vinyl Patches .....	\$ 6.00
# PSBLK	27" x 24" Roll .....	\$ 9.00



## VINYL PATCH KIT

This kit includes everything you need to professionally patch all types of vinyl leaks. Comes in a convenient carrying case.

The kit includes:

- 1 – White Flexible Sealer 4 oz. Tube (#FS4W)
- 1 – Blue Flexible Sealer 4 oz. Tube (#FS4B)
- 1 – 2' Roll of Clear Peel & Stick Patch Material (#PSBLK2)
- 1 – Boxer Vinyl Adhesive 4 oz. Can (BOX04)
- 2 – Vinyl Trowels
- 1 – Assorted Sizes Peel & Stick Vinyl Patches (#PS123)
- 1 – Stainless Steel Scissors
- 1 – Abrasive Cleaning Pad
- Starter sheet of scrap vinyl for patches

# VPKIT	Vinyl Patch Kit.....	\$ 65.00
---------	----------------------	----------

Items on this page qualify for the 10% Supplies Discount.  
See page 5 for details.





**LEAKMASTER™**  
by Anderson

# Professional Leak Repair Solutions

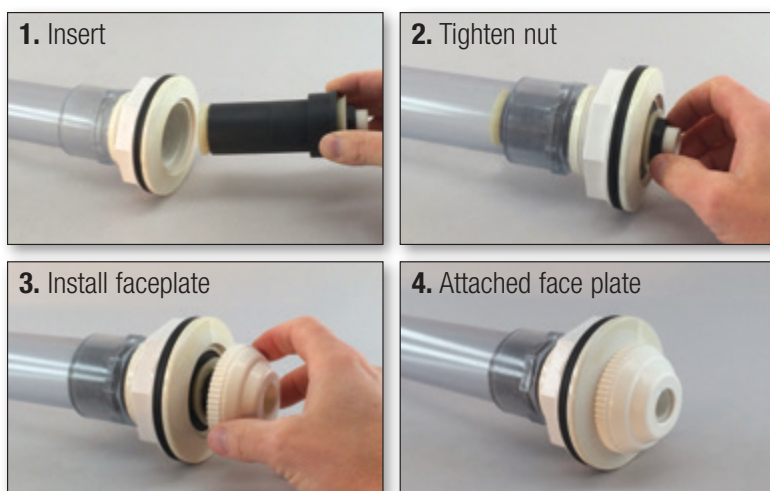
## Cracked Fitting Repair

### INTRODUCING THE FITTING SAVER SYSTEM

**A semi-permanent repair solution for the most common fitting problems.**

The Fitting Saver System of products utilize expandable rubber gaskets to perfectly fit the most popular pool fittings and seal leaks in the pipe joint and fitting body. Installation involves choosing the appropriate Fitting Saver, assuring proper fit, then tightening an oversized hex nut to expand the seal. Once installed, water flow bypasses the damaged area through the installed Fitting Saver. Where fittings are visible, a cosmetic face plate covers the hex nut and seal allowing the repaired fitting to match other face plates in the pool.

### FITTING SAVER BASIC CONCEPT AND PROCEDURE



#RFS04	4" Standard Fitting Saver.....	\$ 79.95
#RFS04-S	4" Fitting Saver - Straight.....	\$ 79.95
#RFS14	14" XL Fitting Saver .....	\$ 89.95
#RFS14-S	14" XL Fitting Saver - Straight .....	\$ 89.95
#RFS03	3" Short Fitting Saver .....	\$ 79.95
#RFSK15	Skimmer Saver - 1-1/2" .....	\$ 89.95
#RFSK20	Skimmer Saver - 2" .....	\$ 89.95
#RFS06	Spa Saver Kit.....	\$ 89.95
#RFSF	Polaris Fitting Saver.....	\$ 79.95



# BOX859



# BOX04

### BOXER VINYL ADHESIVE

Boxer vinyl adhesive repairs holes and tears in vinyl liners when used in conjunction with a patch. This long-lasting repair solution can be used above or underwater on all types of vinyl plastic. Available in a 4 oz. can with dauber applicator or a Vinyl Repair Kit that includes; 2 oz. tube of adhesive, 130 sq. in. of clear patching material and a dauber applicator.

# BOX859	Boxer Vinyl Repair Kit – 2 oz.....	\$ 9.00
# BOX04	Boxer Vinyl Adhesive – 4 oz.....	\$ 11.00



### HH-66 VINYL CEMENT

HH-66 is a superior quality, fast drying adhesive that provides a very strong, yet flexible bond. Use it for all types of vinyl repairs including pool liners, pool covers, tarps and inflatables. HH-66 is waterproof and can be used to repair material under water. Applicator brush included in each can.

# HH-66	Vinyl Cement 4 oz. can.....	\$ 14.00
---------	-----------------------------	----------




### MAIN DRAIN ADAPTER

This main drain adapter fits into nearly all residential main drains regardless of screw pattern. It then allows a new main drain cover to be attached. Great if the screws have broken off or if the new cover you have doesn't match the screw pattern.

- VGB Compliant
- Comes with all necessary hardware.

# MDA	Main Drain Adapter .....	\$ 59.95
-------	--------------------------	----------

 Items on this page qualify for the 10% Supplies Discount.  
See page 5 for details.





# Crack Repair—Structural Reinforcement

## POOL CRACKSTITCH

Structurally reinforce concrete cracks quickly and inexpensively by installing Pool Grid Stitches to prevent further movement. This new and innovative crack repair solution is **faster to install, less expensive, and stronger than other options available on the market.** The stitches feature high tensile strength carbon fiber and an unique woven design that will not corrode or discolor plaster over time. Pool Crack Stitches can be installed before completing a foam injection process to seal leaking cracks or before plastering to add value to any concrete pool renovation.

- **Super Strength:** Concrete pull testing in a certified lab verifies superior strength and performance compared to competitive products, even steel staples.
- **Easy Installation:** The Pool Crack Stitch installs with just a single saw cut, reducing your labor by 50% or more vs. comparable solutions.
- **Low Cost:** At just over \$6 per stitch (including epoxy), Pool Crack Stitches are by far the most effective crack stitching product on the market.
- **Non-corrosive:** The open grid carbon fiber design will not corrode or discolor plaster over time.



### POOL CRACK STITCH KITS

#### # CKG15 – 15 Stitch Kit

Includes:

- 15 Pool Crack Stitches
- 1 Tube Fortress 4000 Epoxy
- 1 Mixing Tip
- 1 Plastic Trowel
- 1 Pair Rubber Gloves

#### # CKG30 – 30 Stitch Kit

Includes:

- 30 Pool Crack Stitches
- 2 Tubes Fortress 4000 Epoxy
- 2 Mixing Tips
- 1 Plastic Trowel
- 3 Pair Rubber Gloves

*\* Installation requires the #CG300 Jake Dispensing Gun*

# CKG15 15 Stitch Kit.....\$ 100.00

# CKG30 30 Stitch Kit.....\$ 190.00



Pool Crack Stitches are brought to you through partnership with Fortress Stabilization Systems, a leading innovator of concrete reinforcement solutions.



# Leak Sealing Injection System

Visit our website to view crack & skimmer demonstration videos.



Fix shell cracks, skimmers & fiberglass stairs with this easy to use low pressure system.

- **Stabilizes and Back-fills:**

Continues, low-pressure injection allows low-viscosity fill material to reach areas of the crack or around skimmer voids before expanding to seal and prevent leak problems.

- **Small Upfront Investment:** Injection tools require minimal investment and can be used for years.

- **Fast Results:** The entire process for a 10' crack usually takes less than half a day.



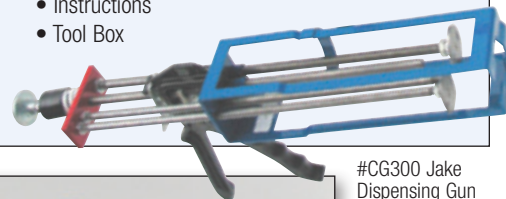
## COMPLETE CRACK REPAIR STARTER KIT

Includes everything you need to get started with low pressure crack and skimmer injection. Using the materials in this kit you should be able to seal up to 30 feet of cracks and 2-3 skimmers (see Carbon Fiber Staple below for cracks requiring structural reinforcement).

**Includes:**

- 1 Jake Dispensing Gun #CG300
- 3 Dual Cartridges of #C301D Surface Seal
- 3 Dual Cartridges of #C102D Injection Foam
- 1 Syringe of #C455M05 Skimmer Port Adhesive
- 3 1/4 x 24 Mixer Tubes w/ Caps
- 50 Surface Injection Ports
- 10 Corner Injection Ports
- 4 Hose Assemblies
- 5 Pairs of Latex Gloves
- 1 Plastic Trowel, 1 Wire Brush and Mixer Sticks
- Instructions
- Tool Box

# CK300 Complete Crack Repair Starter Kit.....\$ 565.00



#CG300 Jake Dispensing Gun



## SKIMMER INJECTION KIT

Enables skimmers to be stabilized and sealed without an investment in special guns. as the single cartridge foam design fits standard caulk guns. Includes enough material to inject 2-3 skimmers.

**Includes:**

- 3 #C102S Injection Foam Cartridges
- 3 #C455M05 Skimmer Port Adhesive Syringes
- 3 Surface Injection Ports
- 3 Mixer Tubes
- 3 Hose Assemblies
- Mixing Sticks & Rubber Gloves

# CK100 Skimmer Injection Kit.....\$ 225.00



## STAIR FOAM KIT

Support hollow or cracked fiberglass steps by filling the void with this rigid foam that expands up to 5-7 times its volume. *Application requires Dual-cartridge Dispensing Gun – #CG300 or #CG301.*

**Includes:**

- 3 #C601D Stair Foam Cartridges
- 3 Mixer Tubes and Nuts
- 1 Plastic-Aid 1.5 oz. Kit
- Mixing Sticks & Rubber Gloves

# CK600 Stair Foam Kit.....\$ 175.00

**See website for bulk orders and replacement supplies.**

# Professional Leak Repair Solutions



## PIPE EXTENDERS

These PVC Pipe Extenders allow you to cut and reglue schedule 40 PVC pipe at any glued plumbing joint for a permanent repair.

# PEX050	1/2"	Pipe Extender	\$ 2.20
# PEX075	3/4"	Pipe Extender	\$ 2.20
# PEX100	1"	Pipe Extender	\$ 2.90
# PEX125	1-1/4"	Pipe Extender	\$ 4.30
# PEX150	1-1/2"	Pipe Extender	\$ 3.40
# PEX200	2"	Pipe Extender	\$ 3.60
# PEX250	2-1/2"	Pipe Extender	\$ 7.50
# PEX300	3"	Pipe Extender	\$ 12.80
# PEX400	4"	Pipe Extender	\$ 16.20



## EXTENDER FITTINGS

Use these extender fittings when replacing a standard glued in fitting, valve, etc. Extends the length of the new fitting so it can be reglued onto the existing pipe.

# EXT075	3/4"	Extender Fitting	\$ 2.50
# EXT100	1"	Extender Fitting	\$ 2.80
# EXT150	1-1/2"	Extender Fitting	\$ 3.70
# EXT200	2"	Extender Fitting	\$ 4.00



## INSIDE CONNECTOR FITTINGS

Inside connector will join two pieces of PVC Sch. 40 pipe together. Use when pipe has been cut off flush with concrete or buried underground.

# INF100	1"	Inside Connector	\$ 3.30
# INF150	1-1/2"	Inside Connector	\$ 4.20
# INF200	2"	Inside Connector	\$ 4.80



## A+B EPOXY PUTTY

Two-part, hand-moldable epoxy putty cures in 40-60 minutes. Craftsman quality formulation smooths and feathers nicely underwater without excessive clouding, making A+B Putty the perfect choice where appearance is important.

- Repair cracks in skimmers, main drains and fittings
- Fill and repair cracks in plaster, gunite, fiberglass or acrylic
- Available in White, Tan, Gray or Black

# 9904K	A+B Putty 15.5 oz. Kit-White	\$ 20.00
# 9906	A+B Putty 15.5 oz. Kit-Gray	\$ 20.00
# 9908	A+B Putty 14 oz. Kit-Black	\$ 25.00
# 9900	A+B Putty 15.5 oz. Kit-Tan	\$ 20.00

## KWIK REPAIR — ONE PIECE PVC REPAIR

Permanent One-Piece PVC Line Repair and Fitting Replacement



## KWIK REPAIR COUPLERS

# KRC050	1/2"	Repair Coupler	\$ 3.20
# KRC075	3/4"	Repair Coupler	\$ 3.80
# KRC100	1"	Repair Coupler	\$ 4.80
# KRC125	1-1/4"	Repair Coupler	\$ 8.40
# KRC150	1-1/2"	Repair Coupler	\$ 9.20
# KRC200	2"	Repair Coupler	\$ 14.30
# KRC250	2-1/2"	Repair Coupler	\$ 20.90
# KRC300	3"	Repair Coupler	\$ 26.80
# KRC400	4"	Repair Coupler	\$ 43.50



## KWIK REPAIR TEES

# KRT050	1/2"	Repair Tee	\$ 7.10
# KRT075	3/4"	Repair Tee	\$ 8.70
# KRT100	1"	Repair Tee	\$ 10.70
# KRT125	1-1/4"	Repair Tee	\$ 18.90
# KRT150	1-1/2"	Repair Tee	\$ 20.80
# KRT200	2"	Repair Tee	\$ 32.00



## PLASTIC PIPE CABLE SAW

Cut through plastic pipe quickly with this handy cable saw. Plastic hand grips and a 32" stainless steel cable cut almost any plastic pipe. Works great in confined spaces, only 1/4" clearance required.

# CSAW	Cable Saw	\$ 7.00
--------	-----------	---------



## PLAST-AID MULTI-PURPOSE REPAIR PLASTIC

This two part compound (liquid and powder) cures in 15 minutes to a hard, durable, waterproof plastic that can be drilled, cut, sanded and polished, providing a versatile repair solution. It chemically bonds to a variety of plastics including PVC, acrylic, and polycarbonate, in addition to mechanically bonding to a variety of other rough or porous surfaces. It can be applied to wet surfaces and can be colored with acrylic paints.

Use it for PVC pipe or fitting repairs (even pressure side!), acrylic spa repairs, and more!

# PA60	Plast-aid 6 oz. Kit	\$ 30.00
# PA15	Plast-aid 1.5 oz. Kit	\$ 16.00

Call or check our website for current prices.

| 19 | Anderson Manufacturing Company Inc. | 800-348-1316 | [www.leakttools.com](http://www.leakttools.com)

Items on this page qualify for the 10% Supplies Discount.  
See page 5 for details.





# Diving Equipment



## #SS-E SUPER SNORKEL TANKLESS DIVE UNIT

This completely filtered, oil-less compressor operated dive unit allows you to breathe underwater without the problems and expenses of cumbersome tanks. No need to worry about refilling tanks before a job or scratching or denting the pool when getting in or out. This quiet operating compressor weighs less than 29 lb. and includes a 60 foot breathing hose and mouth regulator. The convenient quick connect fittings and adjustable pressure regulator from 5-100 psi allows you to use the compressor for pressure testing. Air delivery 4.8 cfm at 0 psi. The 1.25 H.P. oil-less WOB-L piston compressor draws 10.5 amps max., 110 volt. Includes a six pocket weight belt (weights sold separately).

# SS-E "Super Snorkel" Tankless Dive Unit .....\$ 1,495.00



## WEIGHT BELT AND WEIGHTS

Vinyl coated solid lead diving weights available in 2 sizes. Fade-resistant vinyl is chemically bonded to the weight and will not peel. All corners and edges are rounded. Weights thread onto a 2-inch wide belt through wide belt slots. Extra long 60-inch nylon belt is the longest in the industry.

# WB-60 Weight Belt with Buckle .....\$ 10.00  
 # WBW-2 2 lbs. Blue Plastic Coated Weight .....\$ 9.50  
 # WBW-5 5 lbs. Blue Plastic Coated Weight .....\$ 21.00



## REPLACEMENT PARTS

# SS-E PRE Pressure Regulator for the SS-E compressor .....\$ 34.00  
 # FLTR 01 Replacement top filter for the SS-E compressor .....\$ 29.00  
 # FLTR 05 In-line replacement filter material for SS-E air hose.....\$ 8.00  
 # SS-E REG Replacement Diving Mouth Regulator.....\$ 170.00  
 # SS-E MOU Replacement Rubber Mouth Piece for Regulator ....\$ 6.50



## NEMO SUBMERSIBLE CORDLESS DRILL

Main drain, lights and stair gasket repairs are easy with this rechargeable drill that is waterproof to depths of 15 feet.

- No need for pneumatic or hydraulic lines
- 16 Torque Settings + drill, 2 reversible speed settings, keyless chuck
- All metal that contacts water is marine grade stainless steel

# ND18 NEMO Underwater Drill.....\$ 735.00  
 Includes: Drill, 18 volt Li-Ion battery, 110 volt battery charger, durable hard-sided plastic case and extra chuck.



## DRY SUIT

Finally a dry suit designed specifically for the swimming pool service industry. Made to military specifications of 210 Denier high count nylon, this tough suit will keep you dry and warm. The tightly packed weave provides extraordinary abrasion and puncture resistance. Seat and knee pads offer extra protection and crotch and sidearm panel gussets provide unrestricted freedom of movement. Front entry diagonal zipper allows for fast and easy self donning. Commercial grade latex rubber neck and wrist seals. Zipper neck and wrist covers help protect the suit to insure trouble free operation. Factory installed heavy duty dive boots. One year limited warranty.

# DS-100 "Pool Diver" Dry Suit.....\$ 975.00  
 (XXL additional \$ 50.00)

*When ordering provide height, weight, waist and shoe size. Suits are available in standard sizes from Med. to XXL. Call for sizing help or check our website at [www.leaktools.com](http://www.leaktools.com). Custom sizes also available, call for details.*

## DRY SUIT ACCESSORIES:

Jumpsuit Stay warm with a stretch fleece jumpsuit. This snug fitting suit will wick moisture away from your body for added warmth.  
 Hood Dry suit hood will keep your head dry and the rest of your body warmer. Easy entry back gusset with Velcro closure and throat seal.  
 Dry Suit Bag Heavy duty zippered nylon bag with two pockets, one dry and one with drain grommets for wet.  
 # DS-FL Fleece Jumpsuit.....\$ 150.00  
 # DS-HD Dry Suit Hood .....\$ 70.00  
 # DS-BAG Dry Suit Bag .....\$ 75.00

*Call or check our website for current prices.*

See Page 1  
**TRAINING  
AVAILABLE**

# Complete Leak Detection Packages

These packages are created to include a selection of our most popular equipment and are tailored to the unique needs of pool pros around the country. Don't see quite what you're looking for? We are happy to create custom packages based on your unique needs.

## STARTER PACKAGEB — #PKGST

**\$2,675<sup>00</sup>**



The Starter Package enables you to find both plumbing and structural leaks with a minimal investment. It includes the following items:

- #226 Route Mate Pressure Testing Kit
- #XLT17 Electronic Listening Device
- #HYDX32 Aquarian H2 Hydrophone and Adapter
- #DTKIT Dye Testing Kit
- #DTLC Fixture Isolation Dome
- Leakmaster Sample Pack

## SERVICE PRO PACKAGE – SOUTHERN — #PKGSPS

**\$4,700<sup>00</sup>**



This package is designed for the pool professional that wants to add leak detection as a service offering and operates in an area where concrete pools are most common. It includes the following items:

- #246 Professional Pressure Testing Kit
- #XLT17 Electronic Listening Device
- #HYDX32 Aquarian H2 Hydrophone and Adapter
- #LZ400 Leakalyzer Rapid Water Loss Sensor
- #DTKIT Dye Testing Kit
- #DTLC Fixture Isolation Dome
- Leakmaster Sample Pack

## SERVICE PRO PACKAGE – NORTHERN — #PKGSPN

**\$4,600<sup>00</sup>**



This package is designed for the pool professional that wants to add leak detection as a service offering and operates in an area where vinyl liner pools are popular. It includes the following items:

- #226 Route Mate Pressure Testing Kit
- #XLT17 Electronic Listening Device
- #HYDX32 Aquarian H2 Hydrophone and Adapter
- #LT2400 LeakTrac 2400 Vinyl Liner Leak Detector
- #DTKIT Dye Testing Kit
- #VPKIT Vinyl Patch Kit
- #DTLC Fixture Isolation Dome
- #LTLC2 Version 2 LeakTrac Light Cover
- Leakmaster Sample Pack

***All packages can be upgraded to an XLT30 Listening Device for \$1,400***

## RECOMMENDED PACKAGE ADDITIONS



### # QCH50 50' AIR HOSE

50 ft. air hose with high quality quick connect couplets on each end. Use this to attach your air source to the Pressure Tester.

#QCH50 50' Air Hose .....\$152.00



### # SS-E SUPER SNORKEL TANKLESS DIVE COMPRESSOR

(see page 19)



### ADD-ON PLUG KITS

(see page 4)

# Winterizing Products

Save Time • Save Water • Save Covers • Stay Dry

**SPEED UP  
YOUR POOL  
CLOSINGS!**

## WINTER DUCK PLUG®

### Winterize Plumbing Without Draining Water

This patented duck bill valve allows a large flow of air and water to be blown from return plumbing but does not allow pool water back into the lines.

- No need to drain water below returns
- Winterizing a pool becomes a one person operation
- Eliminates "burping" of lines
- Heavy duty rubber is resistant to anti-freeze and other chemicals
- Includes *optional* yellow cap for a finished look

# WDP150	Winter Duck Plug® for 1-1/2" Threaded Fittings.....	\$ 3.90
# WDP150C	Case of 100 Winter Duck Plugs .....	\$ 351.00



## DUCK PLUG WRENCH

This laser cut steel wrench is perfect for installing or removing the Winter Duck Plug.

# WDP-WR.....	\$ 18.50
---------------	----------



## TESTED AND PROVEN!

THOUSANDS OF POOLS PROTECTED  
THROUGH THE TOUGHEST OF WINTERS



## Big Blue

### WINTERIZING BLOWER

#### BIG BLUE – WINTER BLOWER

Providing 670 air watts of blower power, Big Blue is strong enough to blow out main drains and multiple return lines in seconds. Use with Winter Duck Plugs for fast and effective winter closings without draining water.

#### PERFORMANCE:

- Delivers 140 cfm of back pressure at 0 inches, and 100 cfm at 100 inches
- "Infinity Brush" motor – rated for 1500+ hours of use
- High Efficiency Cooling System
- Compact, durable design

# WB673	Big Blue Winterizing Blower.....	\$ 495.00
---------	----------------------------------	-----------

#### SPECIFICATIONS

- Housing Size: 9.5" x 8.5" x 10"
- Weight: 12 lbs.
- 120 volt 60 Hz AC, draws 13.8 amps
- Blower Fitting: Accepts standard 1-1/2" vacuum hose with locking pin, also includes an adaptor to 1-1/2" pipe.
- Vacuum Fitting: 2" pipe can be adapted as user chooses.



## STAY DRY GLOVES

Long shoulder length gloves keep you dry and warm when working on pool lights, fittings or during winterizing or pool openings.

# GLV26	Stay Dry Gloves .....	\$ 19.95
	(size Large)	
# GLV26XL	Stay Dry Gloves .....	\$ 19.95
	(size X-Large)	



## WINTERIZING ACCESSORIES

We have a number of products to help make winterizing pools much easier. Use our hollow stem Open Inducer plugs when blowing out plumbing lines. Create air locks in pipes with the Tire Valve Attachment (#SV18). Plugs provide an economical and secure way to plug pool lines. *See pages 7 and 8 for these products.*

Call or check our website for current prices.





2885 Country Drive, Suite 190 • St. Paul, MN 55117  
651/484-1316 • 800/348-1316 • Fax: 651/484-0930

[leaktools.com](http://leaktools.com)

We have helped  
thousands of pool  
professionals turn leaks  
into profits.

Now let us help you!

PRSRT STD  
US POSTAGE  
PAID  
PERMIT 4604  
ST. PAUL



## Leak job data collection and reporting program

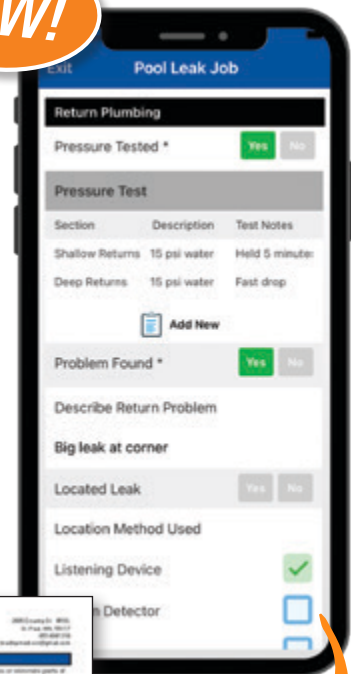
**NEW!**

Leak Logic is a new swimming pool leak job data collection and reporting app that **helps users complete a leak detection job efficiently and effectively**. The mobile data collection portion of the app encourages the leak technician user to follow a best practices procedure at the job site. All collected data is recorded in a web based management portal where each job's results can be reviewed before **automatically generating an attractive, easy to read, and logically organized PDF job report** that is custom branded with your company logo. The report is a concise record of the leak job that provides a valuable and tangible record of the work done.

**To learn more, view sample reports and purchase the program,**  
visit [leaktools.com/leaklogic](http://leaktools.com/leaklogic)



The backend web portal collects and organizes job information for easy record keeping. Job site details can be entered on the backend and assigned out to mobile users for easy communication between office and field.



Data collected on the  
job site is converted  
into an attractive,  
easy-to understand  
PDF report.