



Swimming Pool Leak Detection **PRODUCT CATALOG**

2021 - 2022



Isn't It Time You Started Sharing in the Profits From Leak Detection?

Every pool, no matter how well it was made, will eventually develop a leak. With more pools than ever currently operating...and more being built every year, the opportunity for finding and fixing problems is substantial.

Whether you are just getting started finding leaks, or are an old pro upgrading to the latest equipment, you can count on Anderson Manufacturing to be your partner for leak detection success.

INDUSTRY EXPERTS: With more than 30 years as the industry's leaking expert we stand behind every item we sell with unsurpassed service and a 100% satisfaction guarantee. Plus, we do leak detection jobs ourselves to develop experience that we use to make sure we're delivering useful equipment and accurate information.

TRAINING AND TECHNICAL SUPPORT: We offer a variety of training resources to help you be successful. Take the in-person course at our headquarters in St. Paul, MN or learn the basics by reviewing the free slideshows on leaktools.com. You can even call us from the job site to get answers to your questions about using our equipment or about leak detection in general.

PERSONAL SERVICE: Our friendly staff makes your job easy. You'll always talk to a real person whether you call us or chat with us on the website. We care about making sure you get the right products and equipment for your specific needs.

FAST DELIVERY: Most orders are shipped on the same day we receive them and expedited shipping options are available. We're also experienced with shipping internationally.

WARRANTY: Our products are warranted against defective materials and workmanship for a period of one full year from the date of purchase. We will repair or replace any defective item. Contact us directly for warranty return authorization.

RETURNS: Your satisfaction is important. We accept returns for exchange or credit under the following conditions: 1) Return items are in resalable condition. 2) Items are returned within one month of the date they were purchased. 3) You have received approval from Anderson Manufacturing Company.



SUPPLIES DISCOUNT: A 10% discount is available when you purchase over \$250.00 worth of individual plugs, pressure test accessories, dye testers, repair products or pipe repair products. Items that qualify for the discount are included on pages 5-8, 13-14 and 17-18.

CONTENTS

Getting Started	page 2
Leakalyzer	page 3
Pressure Testing Kits	page 4
Test Plugs – Closed	pages 5-6
Pressure Induction	pages 7-8
Listening Devices/Hydrophones	pages 9-10
LeakTrac Vinyl Liner Leak Detector	page 11
Dye Testing and Dye	page 12
Leakmaster Repair Products	pages 13-14
Crack and Skimmer Repair	pages 15-16
Other Repair Products	pages 17-18
Diving Equipment	page 19
Miscellaneous Products	page 20
Complete Leak Detection Packages	page 21
Winterizing Products	page 22
Training	Back Cover

EASY ORDERING



Phone Orders

1-800-348-1316

1-651-484-1316

8am – 5pm CT, Monday – Friday



Order Online

www.leaktools.com



Prices are not guaranteed and are subject to change without notice. All items purchased from this catalog are pursuant to a shipment contract from the carrier. This means that the risk of loss and title for such items passes to you upon our delivery to that carrier. All information in this catalog is subject to change without notice. While every effort has been made to ensure the information is correct, Anderson Manufacturing Co. does not warrant the accuracy of the information in this catalog. All orders and payments are received, accepted, and processed in St. Paul, Minnesota.

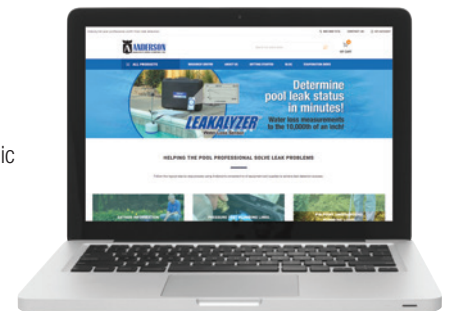
Find the resources you need to help your business grow at leaktools.com!

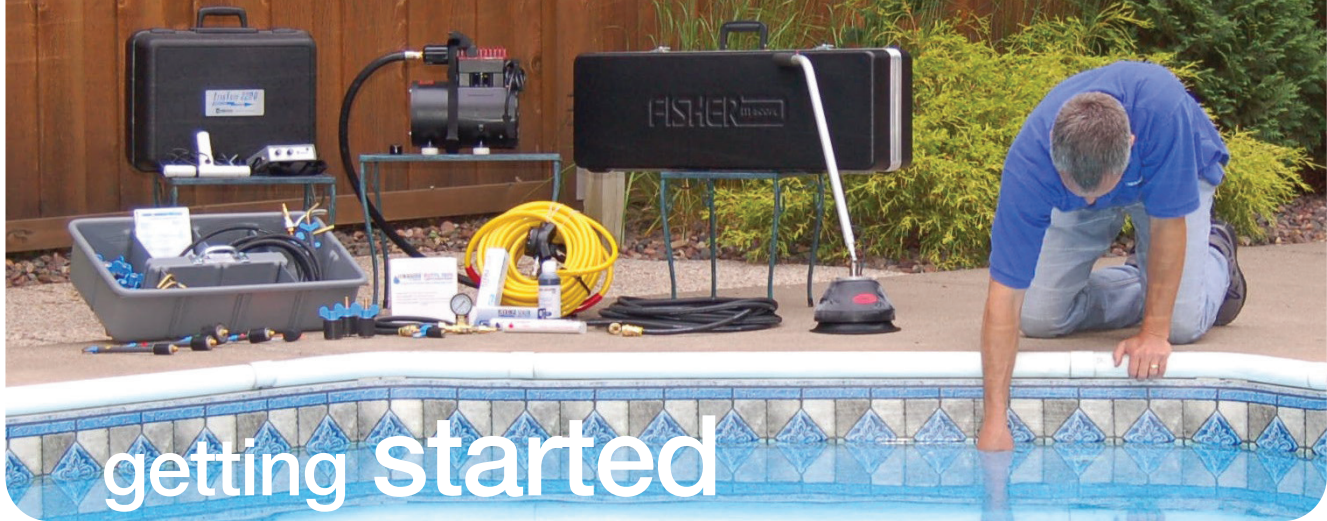
Free Online Training: Our training slideshows provide a comprehensive overview of the leak detection process. They include thorough annotations and diagrams to help you learn at your own pace. Use them to understand what leak jobs entail before making equipment decisions, as a training resource for new technicians, or just to brush up on a skill or tool you're having trouble mastering.

Evaporation Calculator: The evaporation calculator uses the weather data from your area to estimate current evaporation levels in inches per day. Each field can also be modified to mimic the conditions at each individual pool you're working on to help determine if a customer's water loss is due to a leak or just evaporation.

Blog: We regularly update our blog with case studies from the field, equipment tips, educational topics, and more.

...plus videos, magazine articles, product instruction manuals, and more!





getting started

Here's how to achieve consistent leak detection profits with one trip to the pool!



1. GATHER INFORMATION AND CONFIRM LEAKS

Before investing time in extensive testing procedures, it is important to gather information about the pool's actual water loss. The Leakalyzer – Water Loss Sensor (page 3) gives you dependable information in just minutes assuring efficiency of later location steps. The device also provides immediate confirmation that a leak has been repaired, saving wasted time on “call-backs.”



2. PRESSURE TEST PLUMBING LINES

All plumbing lines should be pressure tested not only to identify a leaking section of plumbing, but also to confirm non-leaking sections. Pressure Testing Kits (see page 4) provide an assortment of closed and open stem test plugs along with a versatile pressure tester that allows testing of most any plumbing system without cutting lines.

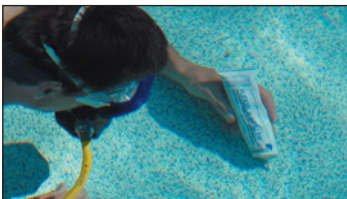


3. PINPOINT UNDERGROUND PLUMBING LEAKS

If a leaking section of plumbing is identified, add a constant flow of air from a regulated air source into the line. As this air escapes into water-saturated soil it will make a distinctive bubbling sound that can be pinpointed through the deck with an electronic listening device (see page 9 and 10).

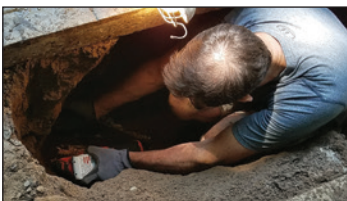
4. LOCATE LEAKS IN POOL STRUCTURE

Use the LeakTrac Vinyl-Liner Leak Detector (see page 11) to quickly locate even the smallest pinhole leaks in vinyl liners without getting into the pool. An underwater “hydrophone” (see page 10) accessory for any of the electronic listening devices can be used to help locate leaks in gunite pools.



5. DYE TEST AND REPAIR LOCATED STRUCTURAL LEAKS

First check located leaks and fittings with a Dye Tester (page 12) to confirm that they are a source of water loss. The Super Snorkel compressor operated dive unit and our “Pool Diver” dry suit (see page 19) may be necessary for checking or repairing problems at the bottom of the pool. A complete line of epoxies and sealants (see page 13-16) provide leak repair solutions for virtually any shell or fitting leak above or below the waterline.



6. REPAIR UNDERGROUND PLUMBING LEAKS

Do this yourself or team-up with someone with concrete cutting and repair expertise. We are a source for specialty PVC repair fittings and tools that allow pipe repairs to be made in tight spots (see page 17).

Interested in training? We offer free, in-depth training materials online at leaktools.com as well as an in-person training course at our facilities in St. Paul, MN. For more information visit leaktools.com/training

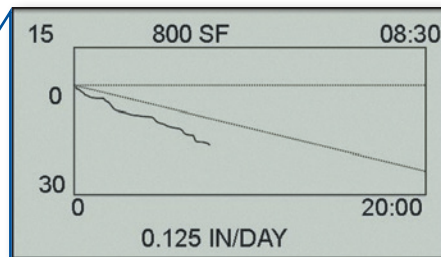
LEAKALYZER™

Water Loss Sensor

NEW
Reporting App

Water Loss Measurements in Minutes!

The **LZ400-Water Loss Sensor** enables rapid determination of a pool's water loss. Using sensitive electronic sensors and proprietary filtering methods it measures water level changes to the 10,000th of an inch. Leaks or excessive evaporation of as little as 1/8 of an inch per day can be identified in 5 minutes.



The solid line represents water loss of 3/4 gallon from an 800 square foot pool over 8 minutes and 30 seconds. This is shown in relation to a reference line (downward sloping dashed line) that represents .125 inches per day loss rate.

Consider the following money making and time saving benefits the Leakalyzer enables:

- Provide "Leak Status Certifications" for pool owners, insurance companies and realtors.
- Confirm a pool's leak status before investing time in extensive leak location procedures.
- Confirm that leaks have been fixed at the completion of repair thus avoiding expensive "call-backs."
- Improve location efficiency by comparing water loss results under different pool conditions (ex: lines plugged vs. unplugged or pump on vs. pump off).

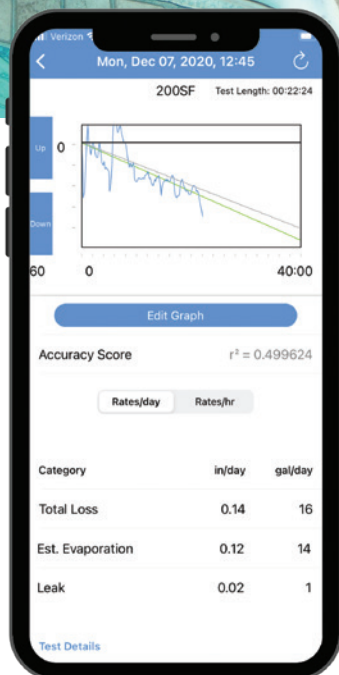
FEATURES AND SPECIFICATIONS:

#LZ400 — WATER LOSS SENSOR

- Graphic LCD readout provides an instantaneous readout as well as a historical plot of water level changes.
- Actual plot can be compared to a straight line slope representing an estimated evaporation rate.
- Detail calculation screen provides estimates of water loss in inches or gallons per hour or day.
- Save up to 10 tests with time and date stamp of test.
- Download saved tests to a computer through a USB connection for further analysis and inclusion in reports, documents or invoices.
- Mark up to 10 events during a test such as pump on/off. Water loss between each mark can be independently analyzed on a computer after data is downloaded.
- Sensor system and embedded software minimizes the effect of rough water and wave motion.
- Quick setup and touch pad controls make operation easy and worry free.
- 2 AA batteries provide over 15 hours of operation.
- All components pack into a durable 18" x 14" x 8" case.

LZ400 Water Loss Sensor

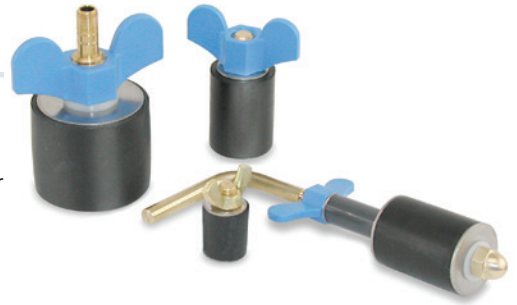
Use the new Bluetooth connection and Reporting App to send tests to your mobile device for editing, analysis, and creation of reports. You can organize an unlimited number of tests, edit settings for each job, crop and add notes to your tests, and generate customer ready PDF reports or JPG images that can be included in your own reports. This free app is available on the Apple App Store and Google Play Store.



SEE OUR WEBSITE FOR MORE INFORMATION AND SAMPLE REPORTS

Call or check our website for current prices.

Pressure Testing Kits



Each Pressure Testing Kit includes a Pressure Tester and an assortment of our best test plugs in sizes and styles to quickly and confidently pressure test most residential swimming pools. Made with heavy duty hardware for a long life and straight sided rubber for a secure seal, these plugs will provide years of dependable service. Depending on where you're located and the type of pools you frequently work on, you will likely customize your kit with additional plug sizes and style based on your experience.

“THE PROFESSIONAL” — #246

48-piece kit is designed for testing pools with 1" to 2" lines. Kit contains the following tools packaged in a durable tote:



Open Stem Inducer Plugs

- 1-020 15/16" (1" pipe)
- 1-040 1-3/8" (1-1/2" male ad.)
- 1-045 1-1/2" (1-1/2" pipe)
- 1-053 1-13/16" (2" male ad.)
- 1-055 1-7/8" (2" pipe)
- 1-040E 1-3/8" (1-1/2" male ad.)

Standard Plugs

- 2-105 9/16" (1/2" pipe)
- 2-112 3/4" (3/4" pipe)
- 2-120 15/16" (1" pipe)
- 2-135 1-1/4" (1-1/4" pipe)
- 2-140 1-3/8" (1-1/2" male ad.)
- 2-145 1-1/2" (1-1/2" pipe)
- 2-152 1-3/4" (1-1/2" threads)
- 2-153 1-13/16" (2" male ad.)
- 2-155 1-7/8" (2" pipe)
- 1-160 2" (2" pipe)
- 1-165 2-1/8" (2" threads)

Extender

- 1-120E 15/16" (1" pipe)
- 1-135E 1-1/4" (1-1/4" pipe)
- 1-145E 1-1/2" (1-1/2" pipe)
- 1-155E 1-7/8" (2" pipe)

Brass Hook

- 2-820 15/16" (1" pipe)
- 2-835 1-1/4" (1-1/4" pipe)
- 2-845 1-1/2" (1-1/2" pipe)
- 2-855 1-7/8" (2" pipe)

Inflatable Plugs

- 1-520 2' hose
- 1-550 1-1/4" – 1-1/2"
- 1-555 2"

Accessories

- 1-PT14 Pressure Tester
- 4-CPH18 18" Inducer Hose
- 1-CL18 Male Quick Connect "L"

“THE ROUTE MATE” — #226

32-piece kit is designed for testing pools with 1-1/2" to 2" lines. Kit contains the following tools packaged in a durable tote:



Open Stem Inducer Plugs

- 1-040 1-3/8" (1-1/2" male ad.)
- 1-045 1-1/2" (1-1/2" pipe)
- 1-053 1-13/16" (2" male ad.)
- 1-055 1-7/8" (2" pipe)
- 1-040E 1-3/8" (1-1/2" male ad.)

Standard Plugs

- 2-140 1-3/8" (1-1/2" male ad.)
- 2-145 1-1/2" (1-1/2" pipe)
- 2-152 1-3/4" (1-1/2" threads)
- 2-153 1-13/16" (2" male ad.)
- 2-155 1-7/8" (2" pipe)
- 1-160 2" (2" pipe)
- 1-165 2-1/8" (2" threads)

Extender

- 1-145E 1-1/2" (1-1/2" pipe)
- 1-155E 1-7/8" (2" pipe)

Brass Hook

- 2-845 1-1/2" (1-1/2" pipe)
- 2-855 1-7/8" (2" pipe)

Inflatable Plugs

- 1-520 2' hose
- 1-550 1-1/4" – 1-1/2"
- 1-555 2"

Accessories

- 1-PT14 Pressure Tester
- 2-CPH18 18" Inducer Hose
- 2-CL18 Male Quick Connect "L"

ADD-ON PLUG KIT — #2AD1

This kit is designed to be purchased as an add-on to one of the pressure testing kits above. It includes a selection of plugs that are commonly purchased in addition to the pressure testing kits to cover larger plumbing or additional access points.

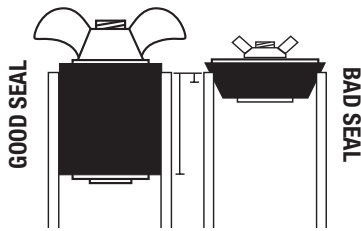
The kit includes the following plug sizes:
2 – 840, 2 – 170, 1 – 045E, 1 – 055E, 1 – 050, 1 – 070, 2 – CL18



Individual Closed Plugs

Accept no compromises when it comes to the sealing effectiveness of your test plugs. A plug that leaks under pressure could mean inaccurate test results. A plug that "pops out" wastes valuable time and places anyone in the area at risk of injury.

Anderson plugs use straight sided rubber for extra sealing area and large wingnuts for easy expansion. Unless otherwise indicated we use only corrosion free hardware ensuring years of trouble free service.



#145



#145N



BRASS WINGNUTS AVAILABLE!

Call to order.

Don't see what you need? Call us, we can custom build special plugs.

Due to frequent changes in raw material cost, prices are subject to change without notice. Call or check our website for current prices.



Items on this page qualify for the 10% Supplies Discount. See page 1 for details.

Call or check our website for current prices.

STANDARD PLUGS-CLOSED

Versatile plug with corrosion free hardware can be used to plug virtually any easily accessible opening.

Part #	Rubber Diameter Inches	Metric (mm)	Pipe Application (Sch 40)	Sticker Color
101	15/32"	12		
105	9/16"	14	1/2" pipe	●
110	11/16"	17		●
112	3/4"	19	3/4" pipe	●
115	13/16"	21		●
120	15/16"	24	1" pipe	●
125	1-1/16"	27	1" threads	●
130	1-1/8"	29		●
135	1-1/4"	32	1-1/4" pipe	●
140	1-3/8"	35	1-1/2" male ad./cop. pipe	●
145	1-1/2"	38	1-1/2" pipe	●
150	1-5/8"	44		●
152	1-3/4"	46	1-1/2" threads	●
153	1-13/16"	47	2" male adapter	●
155	1-7/8"	48	2" pipe	●
160	2"	51	2" pipe	●
165	2-1/8"	54	2" threads	●
170	2-3/8"	60	2" socket & 2-1/2" pipe	●
175	2-1/2"	64	2-1/2" threads	●
180	2-3/4"	70	2-1/2" socket	●
185	3"	76	3" pipe & threads	●
190	3-1/4"	83	3" socket	●
195	3-1/2"	89		●
199	4"	102	4" pipe & threads	●

NYLON TEST PLUGS-CLOSED

Economical model of the standard plug, uses a nylon stem and wing-nut. Maintains superior sealing properties. Great for winterizing too.

Part #	Rubber Diameter Inches	Metric (mm)	Pipe Application (Sch 40)	Sticker Color
105N	9/16"	14	1/2" pipe	●
110N	11/16"	17		●
112N	3/4"	19	3/4" pipe	●
115N	13/16"	21		●
120N	15/16"	24	1" pipe	●
125N	1-1/16"	27	1" threads	●
130N	1-1/8"	29		●
135N	1-1/4"	32	1-1/4" pipe	●
140N	1-3/8"	35	1-1/2" male ad./cop. pipe	●
145N	1-1/2"	38	1-1/2" pipe	●
150N	1-5/8"	44		●
152N	1-3/4"	46	1-1/2" threads	●
153N	1-13/16"	47	2" male adapter	●
155N	1-7/8"	48	2" pipe	●
160N	2"	51	2" pipe	●
165N	2-1/8"	54	2" threads	●
170N	2-3/8"	60	2" socket & 2-1/2" pipe	●

BRASS HOOK PLUGS

A 1-1/2" extension between the wingnut and rubber allows a seal to be made past threads in return lines or main drains.

Part #	Rubber Diameter Inches	Metric (mm)	Pipe Application (Sch 40)	Sticker Color
805	9/16"	14	1/2" pipe	●
810	11/16"	17		●
812	3/4"	19	3/4" pipe	●
815	13/16"	21		●
820	15/16"	24	1" pipe	●
825	1-1/16"	27	1" threads	●
830	1-1/8"	29		●
835	1-1/4"	32	1-1/4" pipe	●
840	1-3/8"	35	1-1/2" male ad./cop. pipe	●
845	1-1/2"	38	1-1/2" pipe	●
850	1-5/8"	44		●
852	1-3/4"	46	1-1/2" threads	●
853	1-13/16"	47	2" male adapter	●
855	1-7/8"	48	2" pipe	●
860	2"	51	2" pipe	●
865	2-1/8"	54	2" threads	●
870	2-3/8"	60	2" socket & 2-1/2" pipe	●



#845



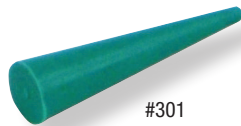
#745



#145E



#150SE



#301



#555

#548

#545

#540

ECONOMY HOOK PLUGS

Economical model of brass hook plug uses nickel-plated hardware.

Part #	Rubber Diameter		Pipe Application (Sch 40)	Sticker Color
	Inches	Metric (mm)		
705	9/16"	14	1/2" pipe	Red
712	3/4"	19	3/4" pipe	Blue
720	15/16"	24	1" pipe	Yellow
735	1-1/4"	32	1-1/4" pipe	Red
740	1-3/8"	35	1-1/2" male ad./cop. pipe	Yellow
745	1-1/2"	38	1-1/2" pipe	Blue
750	1-5/8"	44		Red
752	1-3/4"	46	1-1/2" threads	Yellow
753	1-13/16"	47	2" male adapter	Blue
755	1-7/8"	48	2" pipe	Green

EXTENDER PLUGS-CLOSED

A 6-1/2" extension between the wingnut and rubber allows a seal to be made deep inside a pipe. Skimmers, cleaner lines and therapy heads are common applications.

Part #	Rubber Diameter		Pipe Application (Sch 40)	Sticker Color
	Inches	Metric (mm)		
105E	9/16"	14	1/2" pipe	Red
110E	11/16"	17		Green
112E	3/4"	19	3/4" pipe	Blue
115E	13/16"	21		Red
120E	15/16"	24	1" pipe	Yellow
125E	1-1/16"	27	1" threads	Blue
130E	1-1/8"	29		Green
135E	1-1/4"	32	1-1/4" pipe	Red
140E	1-3/8"	35	1-1/2" male ad./cop. pipe	Yellow
145E	1-1/2"	38	1-1/2" pipe	Blue
150E	1-5/8"	44		Red
152E	1-3/4"	46	1-1/2" threads	Yellow
153E	1-13/16"	47	2" male adapter	Blue
155E	1-7/8"	48	2" pipe	Green
160E	2"	51	2" pipe	Red
165E	2-1/8"	54	2" threads	Yellow
170E	2-3/8"	60	2" socket & 2-1/2" pipe	Green

SKIMMER PLUGS

An extra long extension rubber allows both suction and main drain lines to be blocked on Vari-flow type skimmers that "T" the suction line off the main drain.

Part #	Rubber Diameter		Pipe Application (Sch 40)
	Inches	Metric (mm)	
150SE	1-5/8"	44	1-5/8" Skimmer

GUTTER STOPPER PLUG

2" long stopper tapers from 1/8" to 1/2". Works well for low pressure testing of scum gutters, spa air bubblers, and any other small openings. Neoprene rubber.

Part #	Description
301	Gutter Stopper Plug

INFLATABLE PLUGS

Part #	Pipe Application (Sch 40)
540	1/2"
545	3/4" - 1"
548	3/4" - 1-1/2"
550	1-1/4" - 1-1/2"
555	2"
560	3"
565	4"
570	5"
575	6"
585	8"


Larger sizes available. Supplies Discount does not apply to plugs larger than 4" (part #570 and higher).



#520

EXTENSION HOSES FOR INFLATABLE PLUGS

Part #	Length
520	2 foot
525	5 foot
530	10 foot
535	20 foot

 Items on this page qualify for the 10% Supplies Discount. See page 1 for details.

Call or check our website for current prices.

Pressure Induction Equipment

By introducing water or air into the pool plumbing system leaks can be detected and located. Our system makes the process simple and efficient. Versatile Open Stem Plugs can also be adapted for a variety of other purposes.

A simple quick connect coupling system used in conjunction with Open Stem Plugs allows access to virtually any plumbing opening without cutting pipe or depending on leaky threads.



#045



#PT14

PRESSURE TESTER

The Pressure Tester allows the inducement and measurement of water or air pressure in a plumbing system with the simple turn of a handle. A versatile quick connect coupling system used in conjunction with open stem plugs allows access to virtually any plumbing connection without cutting lines or depending on leaky threads. All brass & stainless steel construction with 30 psi pressure gauge. Air connection is a 1/4" quick connect insert. Water connection hooks to an ordinary garden hose.

Part #	Description
# PT14	Pressure Tester
# PT16	Pressure Tester with oil filled gauge
# PT12	Pressure Tester—water only
# PT10	Builders Air Tester

STANDARD OPEN STEM PLUGS

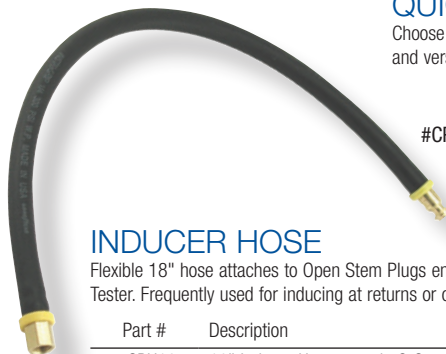
The Standard Open Plug has a 1/4" hole through the center of the plug stem. The plug top is a combination 1/8" pipe thread and 3/8" hose barb.

Part #	Rubber Diameter		Pipe Application (Sch 40)	Sticker Color
	Inches	Metric (mm)		
001CPH*	15/32"	12		
005CPH*	9/16"	14	1/2" pipe	Red
010CPH*	11/16"	17		Green
012CPH*	3/4"	19	3/4" pipe	Blue
015	13/16"	21		Red
020	15/16"	24	1" pipe	Yellow
025	1-1/16"	27	1" threads	Blue
030	1-1/8"	29		Green
035	1-1/4"	32	1-1/4" pipe	Red
040	1-3/8"	35	1-1/2" male ad./cop. pipe	Yellow
045	1-1/2"	38	1-1/2" pipe	Blue
050	1-5/8"	44		Red
052	1-3/4"	46	1-1/2" threads	Yellow
053	1-13/16"	47	2" male adapter	Blue
055	1-7/8"	48	2" pipe	Green
060	2"	51	2" pipe	Red
065	2-1/8"	54	2" threads	Yellow
070	2-3/8"	60	2" socket & 2-1/2" pipe	Green
075	2-1/2"	64	2-1/2" threads	Blue
080	2-3/4"	70	2-1/2" socket	Red
085	3"	76	3" pipe & threads	Yellow
090	3-1/4"	83	3" socket	Green
095	3-1/2"	89		Blue
099	4"	102	4" pipe & threads	Red

* These items are shipped ready to be attached to our PT14 Pressure Tester. Part numbers 015–099 require part numbers CL18 or CPH18 for attachment to PT14.

QUICK CONNECT FITTINGS

Choose the type of quick connect fitting needed to attach your Open Stem Plugs to your Pressure Tester. To fully realize the time saving benefit and versatility of the system, most professionals attach one of these fittings to each Standard Open Plug.



#CPH18

INDUCER HOSE

Flexible 18" hose attaches to Open Stem Plugs enabling connection to Pressure Tester. Frequently used for inducing at returns or open pipe.

Part #	Description
# CPH18	18" Inducer Hose to male Q.C.




#CL18

1/8" QUICK CONNECT "L"

Provides compact 90 degree connection between Open Stem Plug and Pressure Tester. Used for testing suction lines from inside pump pots.

Part #	Description
# CL18	Male Quick Connect "L"

Due to frequent changes in raw material costs, prices are subject to change without notice. Call or check our website for current prices.

 Items on this page qualify for the 10% Supplies Discount. See page 1 for details.



#045E

EXTENDER PLUGS-OPEN

A 6-1/2" extension between wingnut and rubber allows for pressure induction at skimmer and return lines. Includes quick connect coupling top for attaching to the Pressure Tester.

Part #	Rubber Diameter		Pipe Application (Sch 40)	Sticker Color
	Inches	Metric (mm)		
005E	9/16"	14	1/2" pipe	Red
010E	11/16"	17		Green
012E	3/4"	19	3/4" pipe	Blue
015E	13/16"	21		Red
020E	15/16"	24	1" pipe	Yellow
025E	1-1/16"	27	1" threads	Blue
030E	1-1/8"	29		Green
035E	1-1/4"	32	1-1/4" pipe	Red
040E	1-3/8"	35	1-1/2" male ad./cop. pipe	Yellow
045E	1-1/2"	38	1-1/2" pipe	Blue
050E	1-5/8"	44		Red
052E	1-3/4"	46	1-1/2" threads	Yellow
053E	1-13/16"	47	2" male adapter	Blue
055E	1-7/8"	48	2" pipe	Green
060E	2"	51	2" pipe	Red
065E	2-1/8"	54	2" threads	Yellow
070E	2-3/8"	60	2" socket & 2-1/2" pipe	Green



#555BP

INFLATABLE PLUGS-OPEN

Combines the versatility of an inflatable plug with pressure induction capabilities. Great for inducing through Jandy Valves or other hard to reach spots. Parts 550BP, 555BP, and 557BP include a 90 degree quick connect for attachment to the Pressure Tester.

Part #	For Pipe Diameter
550BP	1-1/2"
555BP	2"
557BP	2-1/2"
0560	3" (Requires 1" standard open plug #020)
0565	4" (Requires 1" standard open plug #020)
0570	5" (Requires 1" standard open plug #020)
0575	6" (Requires 1-1/2" standard open plug #045)
0585	8" (Requires 3" standard open plug #085)

Larger sizes available. Supplies Discount does not apply to plugs larger than 2" (part #557BP and higher).



#550Q

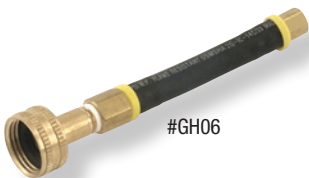
Q-BALL PLUG

This versatile Open Inflatable Plug with 2-1/2 foot flexible hoses attached allows easy access to Multi-Port Valves for pressure induction. Includes quick connect air fittings.

Part #	For Pipe Diameter
550Q	1-1/2"

OTHER ACCESSORIES FOR OPEN STEM PLUGS

Attach these accessories to your open stem plugs for a wide variety of applications beyond just pressure testing of existing plumbing.



#GH06

PUMP PRIMING ATTACHMENT

This 6" long hose screws to the top of Standard Open Plugs allowing them to be attached to a garden hose to prime the pump.

Part #	Description
# GH06	6" Pump Priming Attachment



#SV18

TIRE VALVE ATTACHMENT

Attaches to the top of Standard Open Plugs to create an air lock for winterizing.

Part #	Pipe Application (Sch 40)
# SV18	Tire Valve Attachment



#PT10

BUILDERS AIR TESTER

Easily attaches to our Standard Open Plugs. A Schrader valve on the tester allows the system to be charged with a standard air chuck.

Part #	Description
# PT10	Builders Air Tester



Items on this page qualify for the 10% Supplies Discount. See page 1 for details.

Check our website or call for information about Air Hoses.

Call or check our website for current prices.



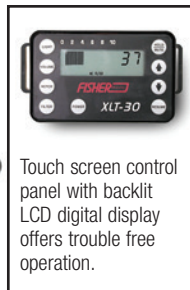
The XLT30H Big Foot Microphone has a rigid handle that allows "hands free" listening.

Listening Devices

Listening devices are used to pinpoint underground plumbing leaks by detecting the distinctive bubbling sound created when air is blown through the leak into water saturated soil.

ELECTRONIC LISTENING DEVICES OFFER THE LATEST IN DIGITAL CIRCUITRY, EASE OF USE AND ADVANCED ACOUSTICAL TECHNOLOGY

Fisher's XLT17 and XLT30H electronic listening devices have been updated with powerful leak finding features. Both units now feature easy to use touch-pad controls and a LCD display to provide a logical and dependable user interface that also protects the unit from dirt, moisture and rough treatment. Revamped electronics and microphones enhance even the weakest sounds deep underground or in sound muffling conditions. Both units now include multiple filtering options including Hi-pass, Low-pass, and Band-pass settings. The XLT30H also includes a unique "Notch" filter that allows elimination of a narrow frequency band to reduce unwanted background noises.



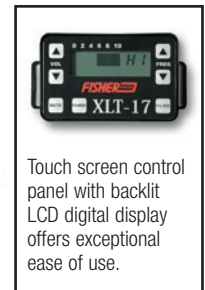
Touch screen control panel with backlit LCD digital display offers trouble free operation.

#XLT30H FISHER ELECTRONIC LISTENING DEVICE

XLT30H Features:

- Advanced amplification and filtering circuitry provides excellent sensitivity
- Includes the popular "Bigfoot" microphone with a solid handle for listening through solid substances, as well as a ground probe for listening through grass and gravel
- 4 different filter options including a "Notch" filter that enables elimination of specific unwanted sounds
- LCD readout with backlighting
- Peak hold feature allows for sound comparison
- Switch enables optimized frequency tuning for underground leaks or for hydrophone use
- Two 9 volt batteries provide 40 hours of operation
- Case Dimensions 32" x 8-1/2" x 8-1/4"

XLT30H Fisher Electronic Listening Device



Touch screen control panel with backlit LCD digital display offers exceptional ease of use.

#XLT17 FISHER ELECTRONIC LISTENING DEVICE

XLT17 Features:

- Simple to use and durable, this unit has been designed specifically to address the needs of the average swimming pool service company
- Efficient "Multi sensor" microphone can be adapted for both solid substance listening or with ground rod attachments for listening through grass or gravel
- 3 different filter options
- LCD readout
- Two 9 volt batteries provide 40 hours of operation
- Case dimensions 21" x 15" x 7"

XLT17 Fisher Electronic Listening Device

► What's the right listening device for you?

XLT17 — Great for the service company that wants the amplification and frequency filtering benefits of an electronic device at a reasonable cost. Its simplicity and durability make it great for companies with several technicians who will be sharing the equipment.

XLT30H — This is the most sensitive listening device we have found. Advanced filtering capabilities, digital circuitry and an advanced yet simple user interface makes this the obvious choice for leak detection specialists. Includes settings to maximize sensitivity for use with both ground microphones and hydrophones.

HYDXP — The best choice if you want a hydrophone but don't need underground pipe leak locating capabilities.

Geophone — Strictly for underground pipe leak location, this device is still valued for its simple, mechanical function. While it can be very effective, its "old school" look isn't consistent with those trying to present an image of modern professionalism.

Hydrophones

ADD A HYDROPHONE TO YOUR LISTENING DEVICE

Hydrophones are microphones that have been waterproofed so they can be used underwater. By positioning the hydrophone close to suspected structural leaks or by slipping them inside pipes or down into skimmer throats the distinct sound of water escaping from the pool can often be heard. Additionally, hydrophones can be used to listen for leaks in pressurized plumbing lines that run close to the pool wall. Often listening through the pool wall with a hydrophone will be more effective than listening through the deck.



STANDARD HYDROPHONE

This simple design has been an industry workhorse for years. The affordable microphone delivers good sensitivity in a compact package that can easily fit inside pipes. Not as long lasting as Aquarian versions and does

not include a weight but many prefer the clear crisp sound it picks up.

HYDN17 Standard Hydrophone for XLT17

HYDN30 Standard Hydrophone for XLT30



AQUARIAN H2

Produced by a leader in the hydrophone industry and copied by others, the H2 utilizes an integrated weight within the well protected microphone. This useful and sensitive design can be easily positioned to pick up leaks in all parts of the pool shell.

HYDX32 H2 Hydrophone plus Adapter
(Specify XLT17 or XLT30)



AQUARIAN H3

Utilizing a slightly smaller microphone and a moveable weight, this Aquarian design can be pushed further into pipes than the H2 version. Not quite as long lasting or sensitive as the H2 but a versatile design that can be used in a variety of applications.

HYDX33 H3 Hydrophone plus Adapter
(Specify XLT17 or XLT30)



BASIC HYDROPHONE PACKAGE

Aquarian Hydrophones are also available in this stand-alone package for those who do not require the full featured capability of an XLT17 or XLT30 Listening Device. Includes the Aquarian H2 Hydrophone, a simple off-the-shelf amplifier, over the ear headphones, and a padded carrying case.

HYDXP Basic H2 Hydrophone Package

HYDX32 Replacement H2 Hydrophone

HYDC33 Replacement H3 Hydrophone



Other Pipe Inspection Products



PIPE INSPECTION CAMERAS AND LINE LOCATOR

The pipe inspection camera system from Ridgid is selected for its maneuverability in swimming pool plumbing and good customer service. The camera head spring assembly on each reel is made with durable stainless steel for a long service life. Each reel also includes high-intensity lights for exceptional viewing. There are two camera reels to choose from: the 65' Micro Drain Reel (pipe diameter 1-1/4" to 4") and the 85' Nano Reel (pipe diameter 3/4" to 2"). The monitor for the inspection cameras is purchased separately and features a large screen, easy-to-use interface, and comfortable pistol grip design. It is able to record still images and videos and includes the enhanced like image rotation and digital zoom. The Ridgid Underground Locator can be used to pinpoint the location and depth of the camera heads underground once a leak has been identified.

IS36 Ridgid Inspection Camera Monitor & Scope

ISMR65 Micro Drain Reel Inspection Scope 65' (pipe diameter 1-1/4" to 4")

ISNR85 Nano Reel Inspection Scope 85' (pipe diameter 3/4" to 2")

ISLOC Ridgid Underground Locator

#P512 GEOPHONE

The Geophone accurately locates leaks in buried plumbing lines that have been pressurized with air. It is entirely mechanical, transmitting leak sounds and vibrations directly to your ears through a stethoscope type headpiece. This no frills listening device has been an industry staple for over 30 years. Includes a wooden case.

P512 Geophone

Call or check our website for current prices.



LEAK TRAC 2400

WIRELESS

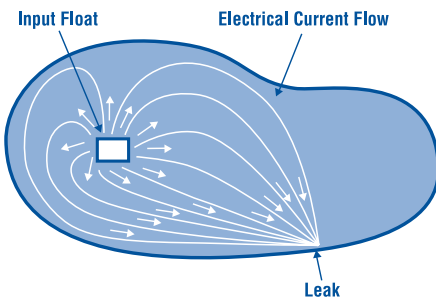
Demonstration Videos Available at leaktools.com

Find vinyl liner leaks in just minutes!

The LeakTrac 2400 uses patented technology to direct you to even the smallest pinhole leak in minutes. Stop wasting time visually inspecting every inch of a liner. Join the thousands of other pool professionals who are saving time and generating profits with this amazing piece of equipment.

The LeakTrac 2400 finds leaks by putting a small electrical charge into the pool water, then tracking the flow of electricity as it makes connections to the ground through conductive penetrations in the liner. This technology is effective on any water containing vessel with an electrically insulating shell (vinyl, fiberglass, etc.).

USING THE LEAKTRAC 2400 TAKES ONLY MINUTES.



Electricity flows from the "Input Float" to wherever there is a conductive path through the liner to the ground. This directional flow of electricity is detectable in virtually any part of the pool with the LeakTrac 2400 "Signal Processing Unit" (SPU) and "Probe".



1 Throw the "Input Float" into the pool. Electricity flows from the "Booster" through the float into the pool.



2 Attach the "Ground Cable" to a grounded object outside the pool. A ladder anchor, diving board anchor or ground stake will work.



3 Plug "Ground" and "Input" cables into the battery powered "Booster" that produces the detectable electrical current flow.



4 The "Probe" attaches to the end of a standard telescopic pole. It is then plugged into the back of the SPU.



5 The simple to operate SPU produces an audible clicking tone when the probe is pointed in the direction of the electrical flow.



6 As the "Probe" is brought closer to a leak the clicking increases in frequency allowing leaks to be pinpointed in minutes.

SPECIFICATIONS:



- Input current less than .1 amp.
- Batteries: Booster (8 AA), SPU (2 AA)
- Case Size: 7" x 19" x 15"
- 3 power settings for long or short range tracking
- Solid state digital construction
- Uses 2400 MHz wireless connection for optional use without connector cable
- 1 year limited warranty
- Includes one light cover for insulating a pool light

LT2400 LeakTrac 2400 — Wireless (2400 MHz)
Does not require cable between Booster and SPU
LTLC Extra Light Cover with hand pump





LEAKMASTER™
by Anderson

Dye Testing



testing
and repair
done right

LEAKMASTER PRE-FILLED DYE TESTERS



These convenient syringe-style testers are filled with a special concentrated dye that holds together underwater. A six-inch plastic "needle" allows for precise dye placement without creating unwanted currents.

- Identify the precise location of structural pool leaks
- Identify water movement into or out of pipes
- Can be refilled with Leakmaster Dye (available in 8 oz. bottles)
- Available in *blue* (for light backgrounds) or *fluorescent yellow* (for dark backgrounds)

Blue Dye

- # DT606 Bag of 6 dye testers
- # DT640 Bulk case of 40 dye testers
- # LD601 8 oz. bottle of dye
- # LD620 Case of 20 bottles of dye
- # DT665 Dye Tester retail hanger card (case 24)

Fluorescent Yellow Dye

- # FT606 Bag of 6 dye testers
- # FT640 Bulk case of 40 dye testers
- # FD601 8 oz. bottle of dye
- # FD620 Case of 20 bottles of dye

- # DTEXT Dye Tester Extension Tubes for dye testers (order by the foot)



**Retail
Best Seller**

DT665



PIPE ISOLATING CONE KIT

Block off all but one opening of the line to be tested with these one-sized-fits-all cones that friction fit into any pipe or fitting up to 2". In the remaining opening use the cone with a hole through it. Use to test returns, jet lines, floor cleaning systems, spa therapy jets and double bottom. Six total cones—including the one with the hole—nest conveniently into a compact stack.

DTCONES 6 Cone Kit



INSPECTION MIRRORS

Allows for visual inspection of hidden areas. Double ball joint links swivel mirror for viewing 360 degrees. Made from tempered spring steel to withstand the stresses of constant repositioning, yet moves freely and holds desired position. Available in two sizes: the rectangular mirror (MIR) is 2-1/8" x 3-1/2" and extends to 15", the circular mirror (MIR-S) has a 7/8" diameter and extends to 27".

- # MIR Inspection Mirror
- # MIR-S Inspection Mirror – Round



#DTKIT DYE TESTING KIT

This kit includes everything you need to get started with dye testing in a convenient carrying case. The kit includes:

- 3 – Blue Dye Testers
- 1 – 8oz Blue Refill Bottle
- 3 – Fluorescent Yellow Dye Testers
- 1 – 8oz Fluorescent Yellow Refill Bottle
- 5ft – Extension Tubing
- 1 – Set of Dye Testing Cones
- 1 – Inspection Mirror

DTKIT Dye Testing Kit



Call or check our website for current prices.



LEAKMASTER™
by Anderson

Professional Leak Repair Products

LEAKMASTER QUICK SET PUTTY



Hand-moldable epoxy putty in a convenient “one stick” format hardens above or below water to an “off-white”. Aggressive adhesiveness and fast 5-minute cure time make Leakmaster Quick Set the logical choice for a multitude of non-cosmetic repairs.

- Repair cracks in skimmers, main drains and fittings
- Fill cracks in plaster, gunite, fiberglass, or acrylic
- Pack around light cable to seal leaking light conduit (permanent)
- Create a cast around pipe to hold Butyl Tape in place for plumbing leaks

- # PQ501 Quick Set Putty single stick
- # PQ512 Quick Set Putty display pack of 12 sticks



**Retail
Best Seller**

LEAKMASTER POOL REPAIR PUTTY

This convenient and versatile epoxy works underwater and cures white in 20-60 minutes. The one-stick format eliminates waste and misproportioning.

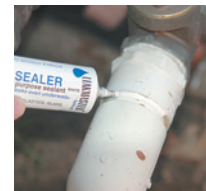
- # PP701 Pool Repair Putty single stick
- # PP712 Pool Repair Putty display pack of 12 sticks

LEAKMASTER FLEXIBLE SEALER

Nitrile rubber-based sealant provides a strong adhesive bond to most any material found around the swimming pool, even vinyl. Squeeze from the tube directly onto the material to be sealed. Flexible Sealer will skin over in seconds, allowing it to be flattened with a wet finger. Cures and remains flexible in minutes to hours depending on application thickness.

- Seal vinyl leaks with or without a patch
- Seal between liner and face plates or fittings
- Use as thread sealant or seal small, suction-side plumbing leaks
- Seal small cracks in gunite or plaster
- Can be applied underwater

- # FS4B Flexible Sealer 4 oz. tube-Blue
- # FS4W Flexible Sealer 4 oz. tube-White



LEAKMASTER BUTYL TAPE



This hand-moldable rubber gap filler can be applied underwater without messy caulk guns or mixing. It retains a flexible, tacky consistency making it well-suited for a variety of permanent or temporary leak-stopping applications.

- Pack around light cable to seal leaking light conduit (removable)
- Replace rubber gaskets with or without removing fitting
- Fill/seal cracks, gaps or voids
- Hold in place with a cast of Quick Set Putty for pipe repairs

- # BT15 Butyl Tape individually boxed 15' roll

Call or check our website for current prices.



Items on this page qualify for the 10% Supplies Discount.
See page 1 for details.



PEEL & STICK VINYL REPAIR PATCHES

Just peel the backing off of these conveniently pre-cut patches and stick them to the liner above or below the water line. Great for service or retail sale.

- No messy cans or tubes of glue needed
- Convenient pre-cut patches save you time at the pool
- Clear material can be used on any pattern
- Solvent-free adhesive bonds tenaciously underwater
- Repairs all types of vinyl including inflatables
- Zip-lock packaging (suitable for peg board display) facilitates both service and retail applications

- # PS100 1" Peel & Stick Patches (bag of 30)
- # PS150 1-1/2" Peel & Stick Patches (bag of 20)
- # PS200 2" Peel & Stick Patches (bag of 12)
- # PS123 Assorted Sizes Peel & Stick Vinyl Patches
- # PSBLK2 7" x 24" Roll



VINYL PATCH KIT

This kit includes everything you need to professionally patch all types of vinyl leaks. Comes in a convenient carrying case.

The kit includes:

- 1 – White Flexible Sealer 4oz Tube (#FS4W)
- 1 – Blue Flexible Sealer 4oz Tube (#FS4B)
- 1 – 2' Roll of Clear Peel & Stick Patch Material (#PSBLK2)
- 1 – Boxer Vinyl Adhesive 4oz Can (BOX04)
- 2 – Vinyl Trowels
- 1 – Assorted Sizes Peel & Stick Vinyl Patches (#PS123)
- 1 – Stainless Steel Scissors
- 1 – Abrasive Cleaning Pad
- Starter sheet of scrap vinyl for patches

- # VPKIT Vinyl Patch Kit



All-Purpose Pool Repair Solution

Leakmaster Pool Glue is a permanent repair solution for a wide variety of pool surfaces. It hardens like an epoxy, but it is much more adhesive and slightly flexible so it's able to move with the material it's bonded to instead of cracking or chipping off. It bonds to PVC, fiberglass, vinyl, PVC, ABS and more – making it a great solution for challenging skimmer and step repairs. Pool glue can be applied underwater and cures in only 20 – 60 minutes. It can also be used with fiberglass mesh strips for extra reinforcement.

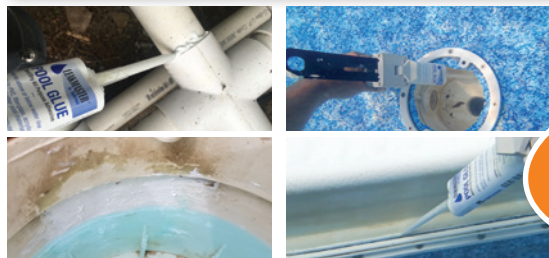


PGK3 COMPLETE STARTER KIT

- | | | |
|------------------------------|-----------------------------|-----------------------------|
| 4 HG50 50 ml Glue Cartridges | 2 6" Bevel Edge Spreaders | 1 4" x 10' Fiberglass Cloth |
| 1 LP50 Dispenser Gun | 2 6" x 8" Mixing Boards | |
| 10 Mixer Tips | 1 2" x 10' Fiberglass Cloth | |

PURCHASE INDIVIDUALLY

- | | |
|--|--|
| # PG50 50 ml Cartridge of Pool Glue | # HGMB5 Small 6" x 8" Mixing Board |
| # LP50 Dispenser Gun for 50 ml Cartridge | # HGMBL Large 12" x 12" Mixing Board |
| # HGCON Caulk Gun Converter for 50ml | # HGFGS Small 2" x 10' Fiberglass Cloth |
| # HGTP Mixer Tips | # HGFGFL Large 4" x 10' Fiberglass Cloth |
| # HGSP6 6" Bevel Edge Spreader | |



**GREAT SKIMMER
& STEP REPAIR!**

Great for any PVC or fiberglass repairs!
See our website for more information.



Items on this page qualify for the 10% Supplies Discount.
See page 1 for details.

Call or check our website for current prices.



Foam & Epoxy Injection System

Visit our website to view crack & skimmer demonstration videos.



Fix shell cracks, skimmers & fiberglass stairs with this easy to use low pressure system.

• Stabilizes and back-fills

Urethane foam flows all the way through to the backside of the crack or around skimmer voids before expanding to seal and prevent leak problems.

• Small up-front investment

Injection tools cost under \$150 (additional tools required for surface prep and finishing).

• Jobs can be completed quickly

The entire process for a 10' crack usually takes less than 1/2 of a day (assuming pool has been drained). Skimmer repairs take about an hour.

• Provides superior penetration

Continuous, low-pressure injection allows fill material to reach all areas of the crack by using the special "Jake" dispensing gun (CG300).



COMPLETE CRACK REPAIR STARTER KIT

Includes everything you need to get started with low pressure crack and skimmer injection. Using the materials in this kit you should be able to seal up to 30 feet of cracks and 2-3 skimmers (see Carbon Fiber Staple below for cracks requiring structural reinforcement).

Includes:

- 1 Jake Dispensing Gun #CG300
- 3 Dual Cartridges of #C301D Surface Seal
- 3 Dual Cartridges of #C102D Injection Foam
- 1 Syringe of #C455M05 Skimmer Port Adhesive
- 3 1/4 x 24 Mixer Tubes w/ Caps
- 50 Surface Injection Ports
- 10 Corner Injection Ports
- 4 Hose Assemblies
- 5 Pairs of Latex Gloves
- 1 Plastic Trowel, 1 Wire Brush and Mixer Sticks
- Instructions
- Tool Box

CK300 Complete Crack Repair Starter Kit

INCREASE REPAIR STRENGTH WITH CARBON FIBER

Pool Grid Stitches add value and strength to crack repairs by distributing the load beyond the filled crack. Carbon fiber provides exceptional tensile strength while being lightweight and low profile. It compares favorably to steel rebar or bulky plate-and-peg systems by requiring much less concrete to be removed for installation, therefore saving time, maintaining structural integrity of the concrete, and using less epoxy for installation. Additionally, because carbon doesn't rust

there is no chance of corrosion stains coming through plaster after the repairs. Pool Grid Stitches feature a unique grid-like, woven formation that allows for the epoxy to permeate the stitch, providing a superior bond with the concrete. These time and cost saving stitches install perpendicularly into just a single saw cut. Stitches are 10" long by .75" wide. Stitch spacing should be every 8" - 12". Pool Grid Stitches are ICC building code certified when used with Fortress 4000 epoxy.



Includes:

- Carbon Fiber Grid Stitches
- Mixer Tubes
- Rubber Gloves
- Fortress 4000 Epoxy
- Plastic Trowel
- Instruction Manual

CKG30 30 Pool Grid Stitch Kit
CKG15 15 Pool Grid Stitch Kit





SKIMMER INJECTION KIT

Enables skimmers to be stabilized and sealed without an investment in special guns. The universal cartridge of Urethane Foam includes both parts in a single tube enabling injections to be done with a standard caulk gun. Includes enough material to inject 2-3 skimmers.

- Includes:**
- 3 Universal Cartridges #C102S Injection Foam
 - 3 Syringes #C455M05 Skimmer Port Adhesive
 - 3 Surface Injection Ports
 - Rubber Gloves
 - 3 1/4" x 32 Mixer Tubes
 - 3 Mixer Sticks
 - 3 Hose Assemblies
 - Instructions

CK100 Skimmer Injection Kit



STAIR FOAM KIT

Support hollow or cracked fiberglass steps by filling the void with this rigid foam that expands up to 5 to 7 times its volume. Simple application involves draining water level to below the step...drilling 5/16" holes 12" apart over the hollow area...and injecting* the foam into the void through these holes. Foam expands and hardens in about 15 minutes. Holes and crack can then be filled with Plast-aid.

* Application requires Dual-cartridge Dispensing Gun (#CG300).

- Includes:**
- 3 Cartridges #C601D Stair Foam
 - 3 Mixer Tube Nuts
 - Rubber Gloves
 - Wood Mixing Tubes
 - 3 1/4" x 32 Mixer Tubes
 - 1 Plast-Aid 1.5 oz. kit
 - Instructions

CK600 Stair Foam Kit



EPOXIES AND URETHANE FOAM

Part #	Description	Size
# C301D	Surface Seal Epoxy	22 oz. Dual
# C322D	Seal-n-Peel Surface Epoxy	22 oz. Dual
# C102D	Injection Foam	22 oz. Dual
# C102S	Injection Foam	11 oz. Single
# C121D	Injection Epoxy	22 oz. Dual
# C455M05	Skimmer Port Adhesive	5 oz. Syringe
# C601D	Stair Foam	22 oz. Dual

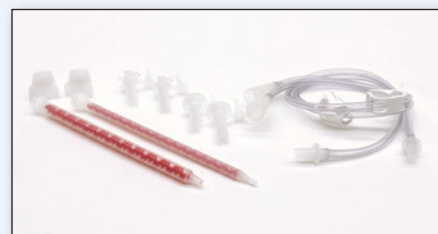
Case quantity of 6 tubes per case available for each material.



"JAKE" DISPENSING GUN

This dispensing gun is the secret to low pressure crack injection. The unique trigger mechanism and compression spring work together to deliver a constant 20-40 psi of injection pressure even when the trigger is not actively being squeezed. The continuous flow of material created by the system facilitates complete crack penetration and assures problem-free mixing.

CG300 "Jake" Dispensing Gun



SUPPLIES

Part #	Description	Package Size
# CG301	Standard Dual Cartridge Gun	1
# CASP100	Injection Ports (surface)	100
# CACP20	Injection Ports (corner)	20
# CAMA10	3/8" x 32 Mixer Tubes (for Stair Foam)	10
# CAMB10	1/4" x 32 Mixer Tubes (for Injection Foam and Epoxy)	10
# CAH5	Hose Assembly	5

Repair Products



PIPE EXTENDERS

These PVC Pipe Extenders allow you to cut and reglue schedule 40 PVC pipe at any glued plumbing joint for a permanent repair.

- # PEX050 1/2" Pipe Extender
- # PEX075 3/4" Pipe Extender
- # PEX100 1" Pipe Extender
- # PEX125 1-1/4" Pipe Extender
- # PEX150 1-1/2" Pipe Extender
- # PEX200 2" Pipe Extender
- # PEX250 2-1/2" Pipe Extender
- # PEX300 3" Pipe Extender
- # PEX400 4" Pipe Extender



EXTENDER FITTINGS

Use these extender fittings when replacing a standard glued in fitting, valve, etc. Extends the length of the new fitting so it can be reglued onto the existing pipe.

- # EXT075 3/4" Extender Fitting
- # EXT100 1" Extender Fitting
- # EXT150 1-1/2" Extender Fitting
- # EXT200 2" Extender Fitting



INSIDE CONNECTOR FITTINGS

Inside connector will join two pieces of PVC Sch. 40 pipe together. Use when pipe has been cut off flush with concrete or buried underground.

- # INF100 1" Inside Connector
- # INF150 1-1/2" Inside Connector
- # INF200 2" Inside Connector

KWIK REPAIR – ONE PIECE PVC REPAIR

Permanent One-Piece PVC Line Repair and Fitting Replacement



KWIK REPAIR COUPLERS

- # KRC050 1/2" Repair Coupler
- # KRC075 3/4" Repair Coupler
- # KRC100 1" Repair Coupler
- # KRC125 1-1/4" Repair Coupler
- # KRC150 1-1/2" Repair Coupler
- # KRC200 2" Repair Coupler
- # KRC250 2-1/2" Repair Coupler
- # KRC300 3" Repair Coupler
- # KRC400 4" Repair Coupler



KWIK REPAIR TEES

- # KRT050 1/2" Repair Tee
- # KRT075 3/4" Repair Tee
- # KRT100 1" Repair Tee
- # KRT125 1-1/4" Repair Tee
- # KRT150 1-1/2" Repair Tee
- # KRT200 2" Repair Tee



HH-66 VINYL CEMENT

HH-66 is a superior quality, fast drying adhesive that provides a very strong, yet flexible bond. Use it for all types of vinyl repairs including pool liners, pool covers, tarps and inflatables. HH-66 is waterproof and can be used to repair material under water. Applicator brush included in each can.

- # HH-66 Vinyl Cement 4 oz. can



BOX859



BOX04

BOXER VINYL ADHESIVE

Boxer vinyl adhesive repairs holes and tears in vinyl liners when used in conjunction with a patch. This long-lasting repair solution can be used above or underwater on all types of vinyl plastic. Available in a 4 oz. can with dauber applicator or a Vinyl Repair Kit that includes; 2 oz. tube of adhesive, 130 sq. in. of clear patching material and a dauber applicator.

- # BOX859 Boxer Vinyl Repair Kit – 2 oz.
- # BOX04 Boxer Vinyl Adhesive – 4 oz.



PLAST-AID MULTI-PURPOSE REPAIR PLASTIC

This two part compound (liquid and powder) cures in 15 minutes to a hard, durable, waterproof plastic that can be drilled, cut, sanded and polished, providing a versatile repair solution. It chemically bonds to a variety of plastics including PVC, acrylic, and polycarbonate, in addition to mechanically bonding to a variety of other rough or porous surfaces. It can be applied to wet surfaces and can be colored with acrylic paints.

Use it for PVC pipe or fitting repairs (even pressure side!), acrylic spa repairs, and more!

- # PA60 Plast-aid 6 oz. Kit
- # PA15 Plast-aid 1.5 oz. Kit



A+B EPOXY PUTTY

Two-part, hand-moldable epoxy putty cures in 40-60 minutes. Craftsman quality formulation smoothes and feathers nicely underwater without excessive clouding, making A+B Putty the perfect choice where appearance is important.

- Repair cracks in skimmers, main drains and fittings
- Fill and repair cracks in plaster, gunite, fiberglass or acrylic
- Available in White, Tan, Gray or Black

- # 9904K A+B Putty 15.5 oz. Kit-White
- # 9906 A+B Putty 15.5 oz. Kit-Gray
- # 9908 A+B Putty 14 oz. Kit-Black
- # 9900 A+B Putty 15.5 oz. Kit-Tan

Call or check our website for current prices.

Items on this page qualify for the 10% Supplies Discount.
See page 1 for details.



Cracked Fitting Repair

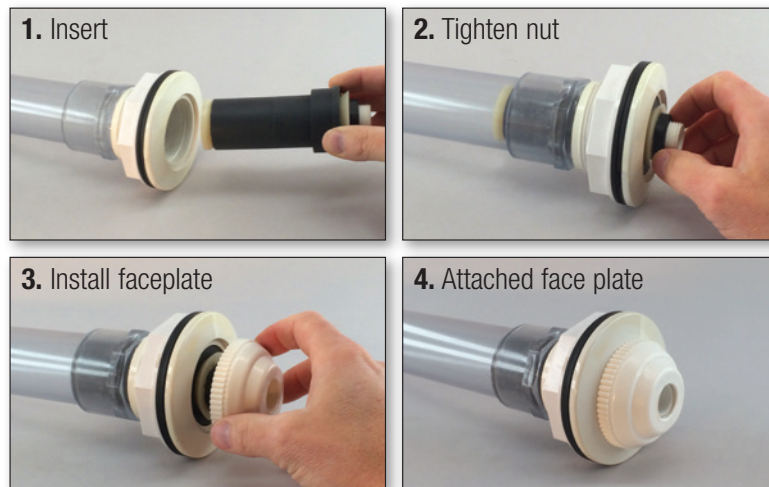
INTRODUCING THE FITTING SAVER SYSTEM

A semi-permanent repair solution for the most common fitting problems.

The Fitting Saver System of products utilize expandable rubber gaskets to perfectly fit the most popular pool fittings and seal leaks in the pipe joint and fitting body. Installation involves choosing the appropriate Fitting Saver, assuring proper fit, then tightening an oversized hex nut to expand the seal. Once installed, water flow bypasses the damaged area through the installed Fitting Saver. Where fittings are visible, a cosmetic face plate covers the hex nut and seal allowing the repaired fitting to match other face plates in the pool.



FITTING SAVER BASIC CONCEPT AND PROCEDURE



- Fix virtually any broken fitting without deck destruction or re-plumbing!
- Sell as a permanent repair or as a temporary fix until a more extensive repair can be scheduled or afforded.
- Installs in minutes with simple hand tools.
- Maintain flow through fitting.
- Finished repair looks like new.

Visit www.leaktools.com for more installation photos and instructions.

	Part #	Description	Application
	RFS03	Fitting Saver Short	Short Version of the Standard Fitting Saver 1022, 1023, 1408 or other 1-1/2" fittings with screw in eyeballs Damage in fitting body or glue joint
	RFS04	Fitting Saver	1022, 1023, 1408 or other 1-1/2" fittings with screw in eyeballs Damage in fitting body or glue joint
	RFS14	Fitting Saver XL	1022, 1023, 1408 or other 1-1/2" fittings with screw in eyeballs. Damage in pipe up to 13" from wall
	RFS14S	Fitting Saver XL – Straight	Returns with straight pipe through pool wall (no threads). Damage in pipe up to 13" from wall
	RFS06	Spa Saver Kit	SP1430 / Waterway "1/4 turn" and others Damage in fitting body
	RFSK15 RFSK20	Skimmer Saver—1-1/2" Skimmer Saver—2"	Most Skimmer w/ 1-1/2" plumbing Most Skimmer w/ 2" plumbing Damage up to 6" into straight pipe
	RFSP	Polaris Fitting Saver	Polaris Wall Fitting



Items on this page qualify for the 10% Supplies Discount.
See page 1 for details.

Call or check our website for current prices.

Diving Equipment



#SS-E SUPER SNORKEL TANKLESS DIVE UNIT

This completely filtered, oil-less compressor operated dive unit allows you to breathe underwater without the problems and expenses of cumbersome tanks. No need to worry about refilling tanks before a job or scratching or denting the pool when getting in or out. This quiet operating compressor weighs less than 29 lb. and includes a 60 foot breathing hose and mouth regulator. The convenient quick connect fittings and adjustable pressure regulator from 5-100 psi allows you to use the compressor for pressure testing. Air delivery 4.8 cfm at 0 psi. The 1.25 H.P. oil-less WOB-L piston compressor draws 10.5 amps max., 110 volt. Includes a six pocket weight belt (weights sold separately).

SS-E "Super Snorkel" Tankless Dive Unit



WEIGHT BELT AND WEIGHTS

Vinyl coated solid lead diving weights available in 2 sizes. Fade-resistant vinyl is chemically bonded to the weight and will not peel. All corners and edges are rounded. Weights thread onto a 2-inch wide belt through wide belt slots. Extra long 60-inch nylon belt is the longest in the industry.

- # WB-60 Weight Belt with Buckle
- # WBW-2 2 lbs. Blue Plastic Coated Weight
- # WBW-5 5 lbs. Blue Plastic Coated Weight



REPLACEMENT PARTS

- # SS-E PRE Pressure Regulator for the SS-E compressor
- # FLTR 01 Replacement top filter for the SS-E compressor
- # FLTR 05 In-line replacement filter material for SS-E air hose
- # SS-E REG Replacement Diving Mouth Regulator

SS-E MOU Replacement Rubber Mouth Piece for Regulator



NEMO SUBMERSIBLE CORDLESS DRILL

Main drain, lights and stair gasket repairs are easy with this rechargeable drill that is waterproof to depths of 15 feet.

- No need for pneumatic or hydraulic lines
- 16 Torque Settings + drill, 2 reversible speed settings, keyless chuck
- All metal that contacts water is marine grade stainless steel

ND18 NEMO Underwater Drill

Includes: Drill, 18 volt Li-Ion battery, 110 volt battery charger, durable hard-sided plastic case and extra chuck.



DRY SUIT

Finally a dry suit designed specifically for the swimming pool service industry. Made to military specifications of 210 Denier high count nylon, this tough suit will keep you dry and warm. The tightly packed weave provides extraordinary abrasion and puncture resistance. Seat and knee pads offer extra protection and crotch and sidearm panel gussets provide unrestricted freedom of movement. Front entry diagonal zipper allows for fast and easy self donning. Commercial grade latex rubber neck and wrist seals. Zipper neck and wrist covers help protect the suit to insure trouble free operation. Factory installed heavy duty dive boots. One year limited warranty.

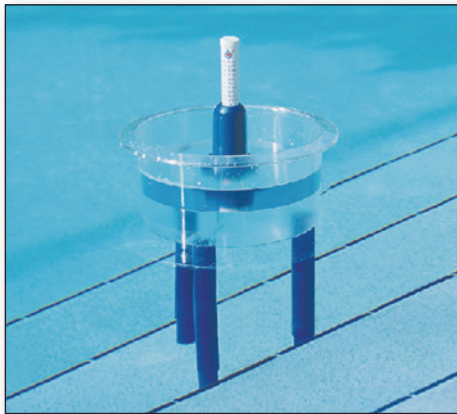
DS-100 "Pool Diver" Dry Suit
(XXL additional cost)

When ordering provide height, weight, waist and shoe size. Suits are available in standard sizes from Med. to XXL. Call for sizing help or check our website at www.leaktools.com. Custom sizes also available, call for details.

DRY SUIT ACCESSORIES:

- Jumpsuit Stay warm with a stretch fleece jumpsuit. This snug fitting suit will wick moisture away from your body for added warmth.
- Hood Dry suit hood will keep your head dry and the rest of your body warmer. Easy entry back gusset with Velcro closure and throat seal.
- Dry Suit Bag Heavy duty zippered nylon bag with two pockets, one dry and one with drain grommets for wet.
- # DS-FL Fleece Jumpsuit
- # DS-HD Dry Suit Hood
- # DS-BAG Dry Suit Bag
- # DS-PKG Dry suit complete package
(Includes Dry Suit and all listed accessories, XXL additional \$50.)

Misc. Products



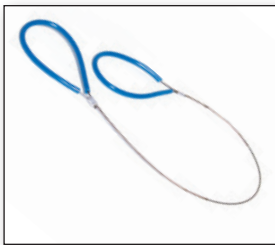
CHECK-A-LEAK AUTOMATIC LEAK DETECTOR

Works in all types of pools, spas, & ornamental ponds. Easy to use, accurate, saves water, saves chemicals, saves you time and money! Automatically compensates for rain and evaporation.

Check-A-Leak utilizes two floats that compare the changes in water levels in two separate chambers of the unit. The two chambers consist of 1.) Water that is isolated from the pool and that is affected only by rain and evaporation. 2.) A tube that goes through the bottom of the body and is directly connected to the pool water.

The water level in the pool chamber is always the same as the level in the pool. The two floats respond to the changes in the two chambers. If there is a leak in the pool, the leak gauge moves down with the level of the pool while the other float remains at its original level. This change in relationship is easily seen on the leak gauge and the loss of water can be measured. Made of heavy duty plastic with a crystal clear finish.

CAL1 Check-A-Leak



PLASTIC PIPE CABLE SAW

Cut through plastic pipe quickly with this handy cable saw. Plastic hand grips and a 32" stainless steel cable cut almost any plastic pipe. Works great in confined spaces, only 1/4" clearance required.

CSAW Cable Saw



EYE BALL SEAT REMOVAL TOOL

Extra long design reaches deep into fittings recessed slots and provides extra leverage. Great for loosening slotted plugs. Fits 1-1/2" slotted wall fitting (Hayward, Pentair, etc.).

MEB-WR



WATER HAMMER LINE FLUSHER

A high volume flusher that uses Patented Pulsating Technology to convert air and water pressure energy into low pressure impacting Kinetic energy pulses to safely clean and remove debris and stubborn obstructions from swimming pool & other plumbing lines without producing any pressure related damage. Requires a 5/8" water hose connection and a compressor with a minimum of 6 cfm at 80 PSI. See our web site for more information.

WH118 Water Hammer



RIDGID INSPECTION CAMERA MONITOR & SCOPE

The Ridgid Video Inspection Monitor comes with a 3' fiber optic scope. The scope can also be used as the viewer for the Micro and Nano extension reels. Short 3' extensions are available. Easily record still images and videos of problems in hard-to-reach areas such as skimmer throats, pipes and light niches. 12V rechargeable Lithium-Ion battery provides longer runtime for extended inspections. Comfortable pistol grip design, large screen, and easy to use interface. Illuminate dark spaces with four bright LEDs on the waterproof aluminum camera head. Get the perfect view with enhanced features like image rotation and digital zoom.

IS36 Ridgid Inspection Camera Monitor & Scope



MAIN DRAIN ADAPTER

This main drain adapter fits into nearly all residential main drains regardless of screw pattern. It then allows a new main drain cover to be attached. Great if the screws have broken off or if the new cover you have doesn't match the screw pattern.

- VGB Compliant
- Comes with all necessary hardware.

MDA Main Drain Adapter

Complete Leak Detection Packages

See back cover
**TRAINING
AVAILABLE**

Looking for a complete package to get you started with leak detection? You've come to the right place. The packages shown below are designed to meet the varying needs of the pool industry – whether you're just looking to be able to find leaks for your own customers or want to go “all in” on starting a specialized leak detection business. While the packages you see on this page are helpful place to start, we can help customize a package that perfectly fits your needs when you give us a call. We'll take into account what your goal, location, budget, and experience are to make sure you end up with the equipment and extra supplies that are just right for you.

STARTER PACKAGE



The Starter Package enables you to find both plumbing and structural leaks with a minimal investment. It includes the following items:

- #226 Route Mate Pressure Testing Kit
- XLT17 Electronic Listening Device
- HYDN17 Standard Hydrophone
- MIR Inspection Mirror
- DTCONES Dye Testing Cones
- LeakMaster Sample Pack

SPECIALIST PACKAGE



This package is designed for the pro that wants to be doing leak detection all day, every day. It includes everything you'll need to find even the toughest of leaks:

- #246 Professional Pressure Testing Kit
- XLT30H Electronic Listening Device
- Aquarian H2 Hydrophone and Adapter for XLT30H
- LZ400 Leakalyzer Water Loss Measurement Device
- LeakTrac 2400 Vinyl Liner Leak Detector
- Ridgid Inspection Scope
- Inspection Mirror
- DTCONES Dye Test Cones
- LeakMaster Sample Pack

SERVICE PRO PACKAGE – SOUTHERN



Designed for the pool service pro that wants to be able to offer leak detection to keep their customers happy and add another revenue stream, this package includes a full selection of tools to be able to find most leaks but also keeps cost in mind. The Southern version is specifically designed for areas where gunite and concrete pools are most popular. It includes the following items:

- #246 Professional Pressure Testing Kit
- XLT17 Electronic Listening Device
- Aquarian H2 Hydrophone and Adapter for XLT17
- LZ400 Leakalyzer Water Loss Measurement Device
- Inspection Mirror
- DTCONES Dye Test Cones
- LeakMaster Sample Pack

SERVICE PRO PACKAGE – NORTHERN



Designed for the pool service pro that wants to be able to offer leak detection to keep their customers happy and add another revenue stream, this package includes a full selection of tools to be able to find most leaks but also keeps cost in mind. The Northern version is specifically designed for areas where vinyl liner pools are popular. It includes the following items:

- #226 Route Mate Pressure Testing Kit
- XLT17 Electronic Listening Device
- Standard Hydrophone for XLT17
- LeakTrac 2400 Vinyl Liner Leak Detector
- Inspection Mirror
- DTCONES Dye Test Cones
- LeakMaster Sample Pack

PACKAGE ADDITIONS



SS-E SUPER SNORKEL TANKLESS DIVE UNIT

This completely filtered oil-less compressor operated dive unit allows you to breathe underwater without the problems and expenses of cumbersome tanks. Compressor can be used as an air source when pressure testing.

QCH50 50' AIR HOSE w/QC COUPLERS

50 ft. air hose with high quality quick connect couplers on each end. Use this to attach your air source to the Pressure Tester.

Winterizing Products

Save Time • Save Water • Save Covers • Stay Dry

**SPEED UP
YOUR POOL
CLOSINGS!**

WINTER DUCK PLUG®

Winterize Plumbing Without Draining Water

This patented duck bill valve allows a large flow of air and water to be blown from return plumbing but does not allow pool water back into the lines.

- No need to drain water below returns
- Winterizing a pool becomes a one person operation
- Eliminates “burping” of lines
- Heavy duty rubber is resistant to anti-freeze and other chemicals
- Includes *optional* yellow cap for a finished look

WDP150 Winter Duck Plug® for 1-1/2" Threaded Fittings

WDP150C Case of 100 Winter Duck Plugs



DUCK PLUG WRENCH

This laser cut steel wrench is perfect for installing or removing the Winter Duck Plug.

WDP-WR



TESTED AND PROVEN!

THOUSANDS OF POOLS PROTECTED
THROUGH THE TOUGHEST OF WINTERS



Big Blue

WINTERIZING BLOWER

BIG BLUE – WINTER BLOWER

Providing 670 air watts of blower power, Big Blue is strong enough to blow out main drains and multiple return lines in seconds. Use with Winter Duck Plugs for fast and effective winter closings without draining water.

PERFORMANCE:

- Delivers 140 cfm of back pressure at 0 inches, and 100 cfm at 100 inches
- “Infinity Brush” motor – rated for 1500+ hours of use
- High Efficiency Cooling System
- Compact, durable design

WB673 Big Blue Winterizing Blower

SPECIFICATIONS

- *Housing Size: 9.5" x 8.5" x 10"*
- *Weight: 12 lbs.*
- *120 volt 60 Hz AC, draws 13.8 amps*
- *Blower Fitting: Accepts standard 1-1/2" vacuum hose with locking pin, also includes an adaptor to 1-1/2" pipe.*
- *Vacuum Fitting: 2" pipe can be adapted as user chooses.*



STAY DRY GLOVES

Long shoulder length gloves keep you dry and warm when working on pool lights, fittings or during winterizing or pool openings.

GLV26 Stay Dry Gloves
(size Large)

GLV26XL Stay Dry Gloves
(size X-Large)

WINTERIZING ACCESSORIES

We have a number of products to help make winterizing pools much easier. Use our hollow stem Open Inducer plugs when blowing out plumbing lines. Create air locks in pipes with the Tire Valve Attachment (#SV18). Plugs provide an economical and secure way to plug pool lines. *See pages 7 and 8 for these products.*



Call or check our website for current prices.



2885 Country Drive, Suite 190 • St. Paul, MN 55117
651/484-1316 • 800/348-1316 • Fax: 651/484-0930

leaktools.com

We have helped thousands of pool professionals turn leaks into profits.

Now let us help you!

PRSRT STD
US POSTAGE
PAID
PERMIT 4604
ST. PAUL

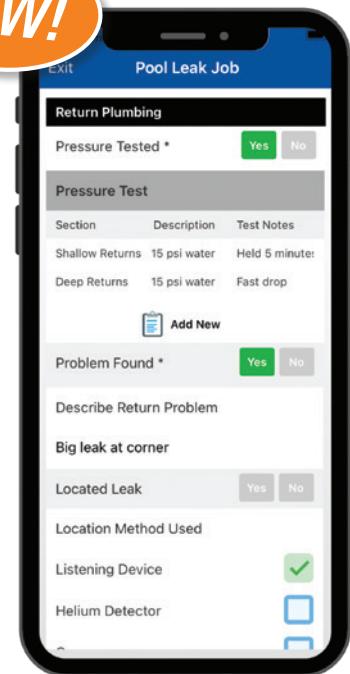


Leak job data collection and reporting program

NEW!

Leak Logic is a new swimming pool leak job data collection and reporting app that **helps users complete a leak detection job efficiently and effectively**. The mobile data collection portion of the app encourages the leak technician user to follow a best practices procedure at the job site. All collected data is recorded in a web based management portal where each job's results can be reviewed before **automatically generating an attractive, easy to read, and logically organized PDF job report** that is custom branded with your company logo. The report is a concise record of the leak job that provides a valuable and tangible record of the work done.

To learn more, view sample reports and purchase the program, visit leaktools.com/leaklogic



Looking for hands-on training?

Sign up for the one-day training course at our facilities in St. Paul, MN!

In-person training from Anderson Manufacturing sets you up with the **technical knowledge you need** to build confidence in your abilities and start profiting from leak detection. Learn about **most efficient process** to follow, the **science behind the tests**, and how to **effectively use top quality equipment** through a mix of hands-on and classroom learning. This course is perfect if you're just starting out, but is also helpful for those that are struggling with some elements even after leak detection for a while.

For more information and upcoming dates visit leaktools.com/training or call us at (800) 348-1316.

